

ILS RWY 25 (CAT II)

LOC I-TYV 109.9	APCH CRS 252°	Rwy ldg 12,007 TDZE 301 Arprt Elev 312
---------------------------	-------------------------	---

[USAF]

LITTLE ROCK AFB (KLRF)

RNP APCH. RNAV1-GPS or RADAR required.

ALSIF-2

MISSED APPROACH: Climb to 900 then climbing right turn to 3000 direct HERCK and hold.

ATIS ★ 119.175 251.1	APP CON 119.5 306.2	TOWER 120.6 269.075	GND CON 132.8 275.8	CLNC DEL 253.5
--------------------------------	-------------------------------	-------------------------------	-------------------------------	--------------------------

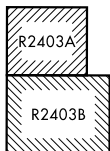
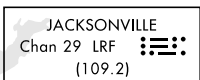
CATEGORY II ILS-SPECIAL AIRCREW & AIRCRAFT CERTIFICATION REQUIRED

ALTERNATE MISSED APPROACH:
Climbing to 3000 fly runway heading until 2 DME, then turn right heading 360° expect further clearance from ATC.

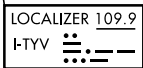
PROCEDURE EFFECTIVE BY NOTAM



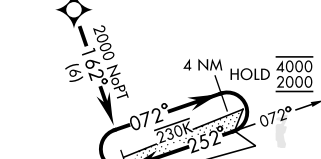
ATC RADAR required for holding above 4000' or greater than 200 KIAS.



CAT E Act: RADAR required when R-2403 active



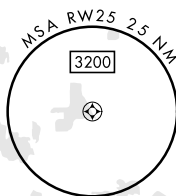
(IAF) AALLI 230K
AALLI entry NA for CAT E aircraft.



ATC RADAR required for holding above 4000' or greater than 230 KIAS.

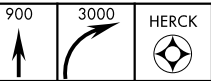
HESUP RADAR LRF 6.1

(IF/IAF) BIELD LRF 10 2000



• 823

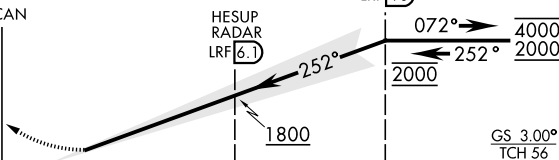
EMERG SAFE ALT 100 NM 4000



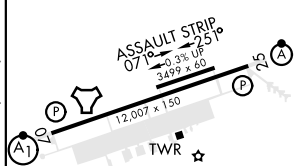
TACAN

HESUP RADAR LRF 6.1

BIELD LRF 10
4 NM Holding Pattern



ELEV 312	TDZE 301
----------	----------



CATEGORY	A	B	C	D	E
S-ILS 25	RA 94/12		100	DA 401	

HIRL Rwy 07-25
TDZ/CL Rwy 25

ILS RWY 25 (CAT II)

SC-1, 28 NOV 2024 to 26 DEC 2024

SC-1, 28 NOV 2024 to 26 DEC 2024