

JACKSONVILLE, ARKANSAS

# RNAV (GPS) RWY 25

WAAS CH <b>67565</b> W25A	APCH CRS <b>252°</b>	Rwy ldg TDZE Arpt Elev	<b>12,007</b> <b>301</b> <b>312</b>
---------------------------------	-------------------------	------------------------------	-------------------------------------------

AL-738 (USAF)

LITTLE ROCK AFB (KLRF)

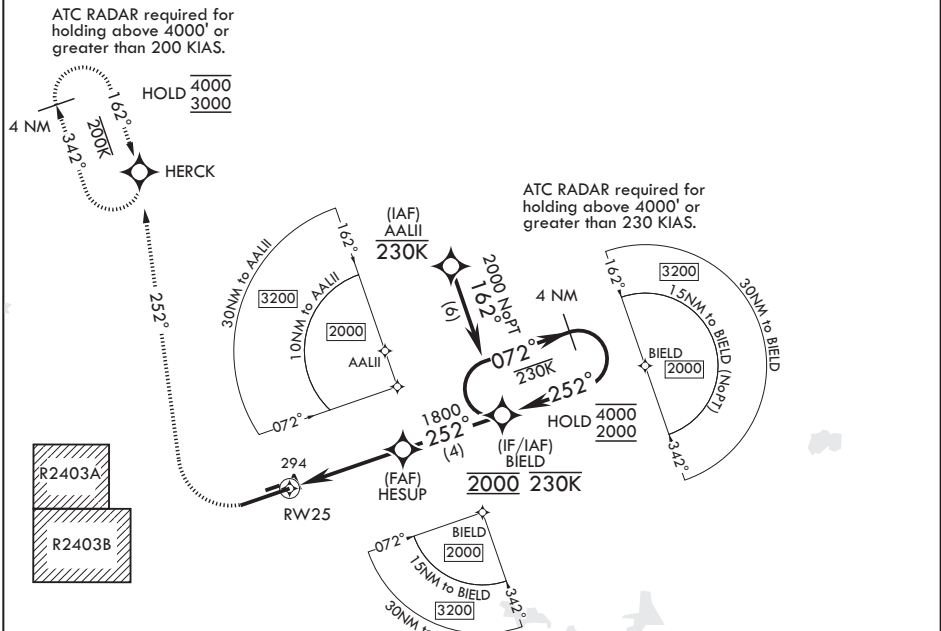
RNP APCH - GPS	ALSIF-2	MISSED APPROACH: Climb to 900 then climbing right turn to 3000 direct HERCK and hold.
RADAR required		
* When ALS inop, increase RVR to 40, vis to 3/4 mile. When TDZL/CL inop increase RVR to 24.		

ATIS* <b>119.175 251.1</b>	APP CON/DEP CON <b>119.5 306.2</b>	TOWER <b>120.6 269.075</b>	GND CON <b>132.8 275.8</b>	CLNC DEL <b>253.5</b>
-------------------------------	---------------------------------------	-------------------------------	-------------------------------	--------------------------

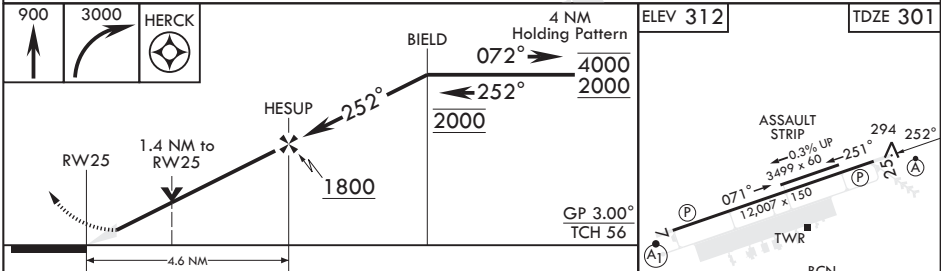
\*\* When ALS inop, increase CAT **850**  
 AB RVR to 55, vis to 1 mile;  
 CAT CD vis to 1 3/8 miles.

ALTERNATE MISSED APPROACH:  
 Climbing to 3000, fly runway heading until 2 DME then right turn heading 360°, expect RADAR vectors from ATC.

\*\*\* Circling not authorized  
 S of Rwy 7-25



EMERG SAFE ALT 100 NM 4000



CATEGORY	A	B	C	D
LPV DA*	501/18		200	(200-½)
LNAV MDA**	780/24	479 (500-½)	780/50	479 (500-1)
CIRCLING***	780-1 468 (500-1)	920-1 608 (700-1)	920-1¼ 608 (700-1¼)	1040-2¼ 728 (800-2¼)

HIRL Rwy 7-25  
 TDZL/CL Rwy 25

JACKSONVILLE, ARKANSAS

34°55'N - 92°09'W

LITTLE ROCK AFB (KLRF)

Orig 10AUG23

# RNAV (GPS) RWY 25

SC-1, 28 NOV 2024 to 26 DEC 2024

SC-1, 28 NOV 2024 to 26 DEC 2024