

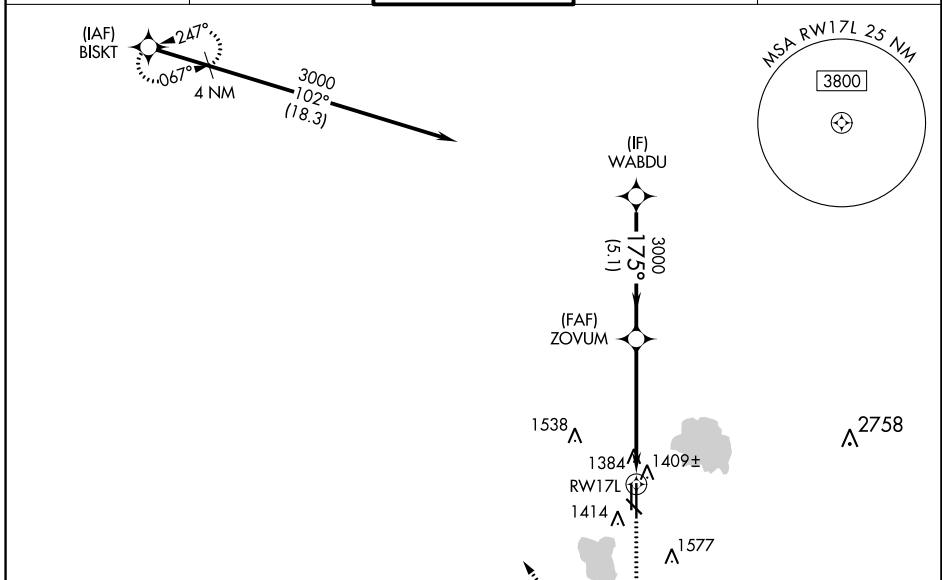
WAAS CH <b>72737</b> W17A	APP CRS <b>175°</b>	Rwy ldg TDZE Apt Elev	<b>6844</b> <b>1291</b> <b>1300</b>
---------------------------------	------------------------	-----------------------------	---

# RNAV (GPS) RWY 17L

WILEY POST (PWA)

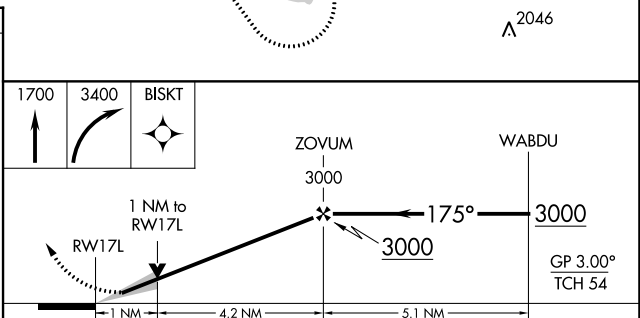
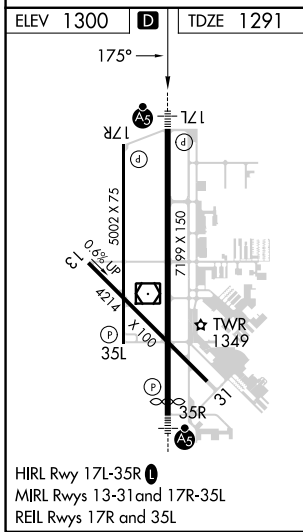
RNP APCH-GPS.		MALSR	MISSED APPROACH: Climb to 1700 then climbing right turn to 3400 direct BISKT and hold.
<p><b>▼</b> For uncompensated Baro-VNAV systems, LNAV/VNAV NA below -13°C or above 54°C. For inop ALS, increase LNAV/VNAV all Cats visibility to ¾ SM and LNAV Cat C/D visibility to 1 SM.</p> <p><b>▲</b> ASR</p>			

ATIS <b>128.725</b>	OKE CITY APP CON <b>124.6 266.8</b>	WILEY POST TOWER ★ <b>126.9 (CTAF) 306.9</b>	GND CON <b>121.7</b>	UNICOM <b>122.95</b>
------------------------	--	---	-------------------------	-------------------------



SC-1, 28 NOV 2024 to 26 DEC 2024

SC-1, 28 NOV 2024 to 26 DEC 2024



CATEGORY	A	B	C	D
LPV DA		1491-½	200 (200-½)	
LNAV/VNAV DA		1590-½	299 (300-½)	
LNAV MDA	1660-½	369 (400-½)	1660-⅝	369 (400-⅝)
<b>C</b> CIRCLING	1780-1	480 (500-1)	1880-1½ 580 (600-1½)	1880-2 580 (600-2)