

(GLADZ4.GLADZ) 24305

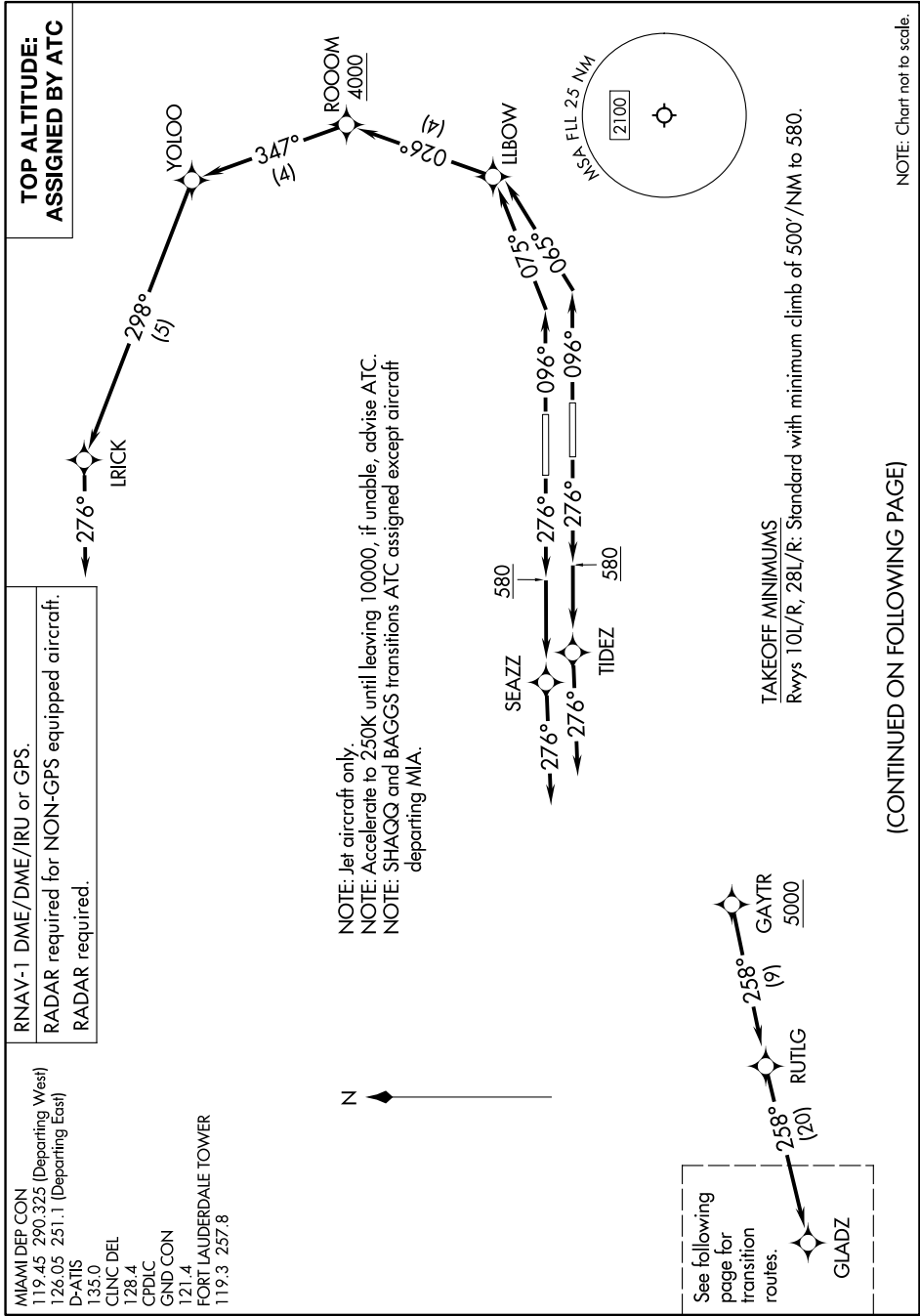
AL-744 (FAA)

FORT LAUDERDALE/HOLLYWOOD INTL (FLL)

GLADZ FOUR DEPARTURE (RNAV) Departure Routes

FORT LAUDERDALE, FLORIDA

SE-3, 28 NOV 2024 to 26 DEC 2024



**TOP ALTITUDE:
ASSIGNED BY ATC**

RNAV-1 DME/DME/IRU or GPS.
 RADAR required for NON-GPS equipped aircraft.
 RADAR required.

MIAMI DEP CON
 119.45 290.325 (Departing West)
 126.05 251.1 (Departing East)
 D-ATIS
 135.0
 CLNC DEL
 128.4
 CPDLC
 GND CON
 121.4
 FORT LAUDERDALE TOWER
 119.3 257.8

NOTE: Jet aircraft only.
 NOTE: Accelerate to 250K until leveling 10000, if unable, advise ATC.
 NOTE: SHAGG and BAGGS transitions ATC assigned except aircraft departing MIA.

See following page for transition routes.

TAKEOFF MINIMUMS
 Rwy's 10L/R, 28L/R: Standard with minimum climb of 500'/NM to 580.

(CONTINUED ON FOLLOWING PAGE)

NOTE: Chart not to scale.

SE-3, 28 NOV 2024 to 26 DEC 2024

GLADZ FOUR DEPARTURE (RNAV) Departure Routes

FORT LAUDERDALE, FLORIDA

(GLADZ4.GLADZ) 31OCT24

FORT LAUDERDALE/HOLLYWOOD INTL (FLL)