

SNAPR TWO DEPARTURE (RNAV)

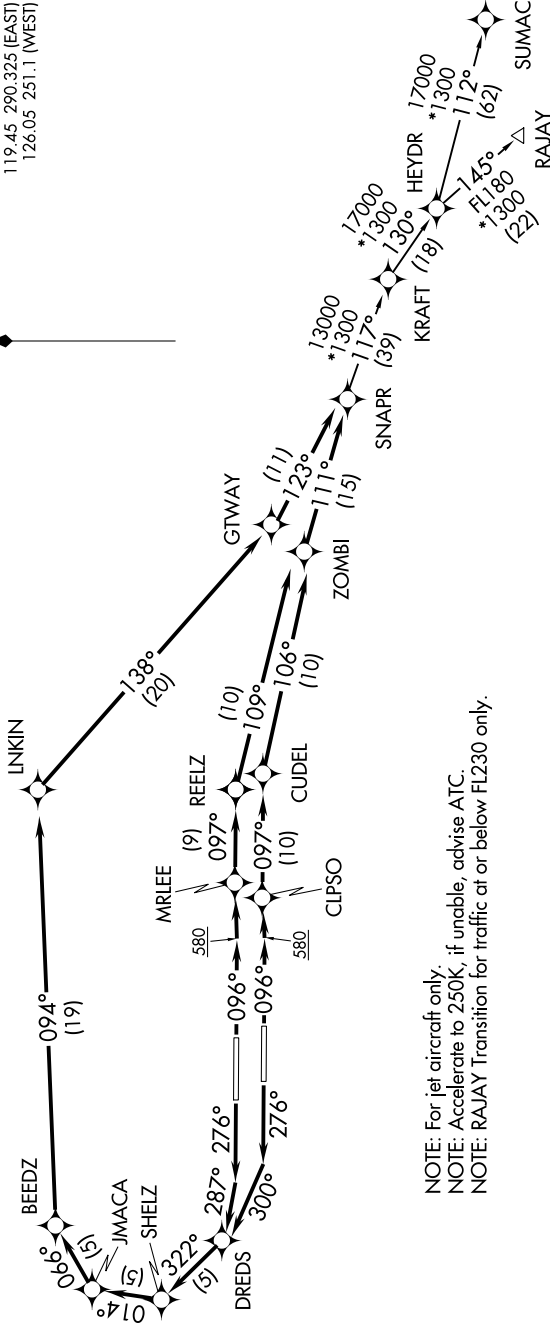
D-ATIS 135.0
 CLNC DEL 128.4
 CPDLC
 GND CON 121.4
 FORT LAUDERDALE TOWER 119.3 257.8
 MIAMI DEP CON 119.45 290.325 (EAST)
 126.05 251.1 (WEST)



TOP ALTITUDE:
4000

SE-3, 28 NOV 2024 to 26 DEC 2024

RNAV 1 - DME/DME/IRU or GPS.
 From HEYDR - GPS.
 RADAR required.



NOTE: For jet aircraft only.
 NOTE: Accelerate to 250K, if unable, advise ATC.
 NOTE: RAJAY Transition for traffic at or below FL230 only.

TAKEOFF MINIMUMS
 Rwy's 10L/R, 28L/R: Standard with minimum climb of 500' per NM to 580.

(NARRATIVE ON FOLLOWING PAGE)

NOTE: Chart not to scale.