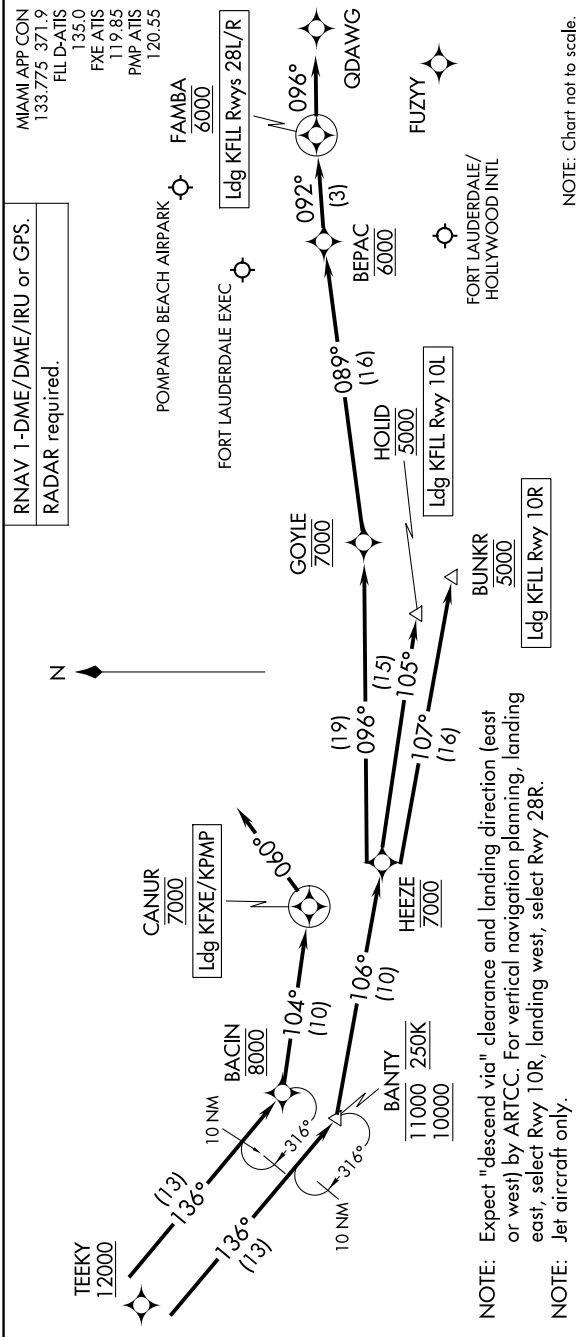


# TEEKY THREE ARRIVAL (RNAV)

Arrival Routes

FORT LAUDERDALE, FLORIDA

SE-3, 28 NOV 2024 to 26 DEC 2024



NOTE: Chart not to scale.

## ARRIVAL ROUTE DESCRIPTION

KFL: From TEEKY on track 136° to cross BANTY between 10000 and 11000 and at 250K, then on track 106° to cross HEEZE at 7000.

LANDING KFL RUNWAY 10L: From HEEZE on track 105° to cross HOLID at 5000. Expect ILS or LOC Rwy 10L approach.

LANDING KFL RUNWAY 10R: From HEEZE on track 107° to cross BUNKR at 5000. Expect ILS or LOC Rwy 10R approach.

LANDING KFL RUNWAYS 28L/R: From HEEZE on track 096° to cross GOYLE at 7000, then on track 089° to cross BEPAC at 6000, then on track 092° to cross FAMBA at 6000. Expect RADAR vectors to final approach course.

LANDING KFYE/KPMP: From TEEKY on track 136° to cross BACIN at 8000, then on track 104° to cross CANIUR at 7000, then on heading 060°. Expect RADAR vectors to final approach course.

SE-3, 28 NOV 2024 to 26 DEC 2024