

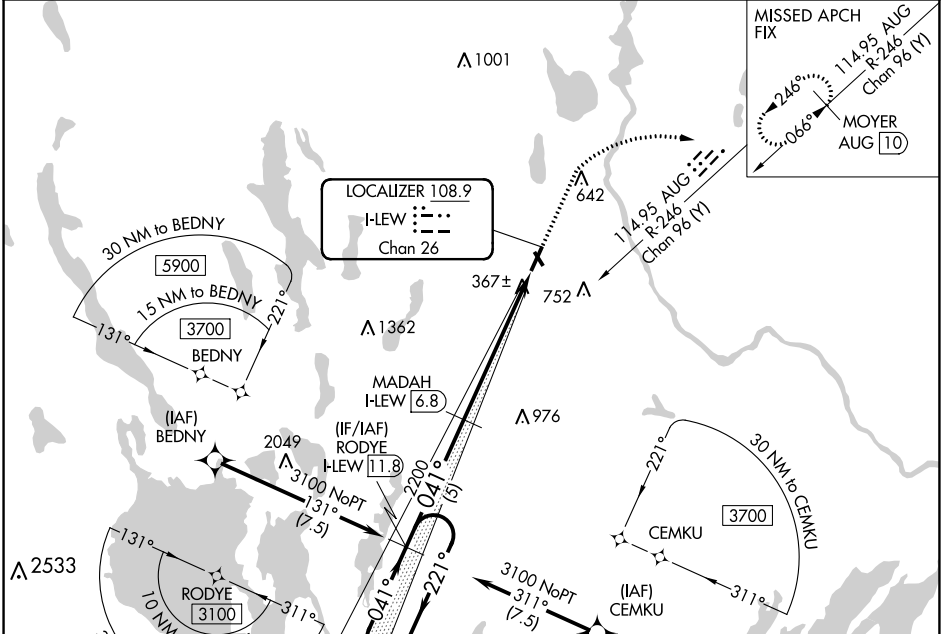
LOC/DME I-LEW 108.9 Chan 26	APP CRS 041°	Rwy Idg TDZE Apr Elev	5001 270 288
---	------------------------	-----------------------------	---

ILS or LOC RWY 4

AUBURN/LEWISTON MUNI (LEW)

DME required. RNP APCH - GPS.		MALSR	MISSED APPROACH: Climb to 900 then climbing right turn to 3000 on heading 080° and on AUG VOR/DME R-246 to MOYER/AUG 10 DME and hold.
<p>▼ Circling to Rwy 17, 22, 35 NA at night. For inop ALS, increase S-LOC 4 Cat A visibility to 1 SM, and Cat C/D to 2½ SM.</p>			

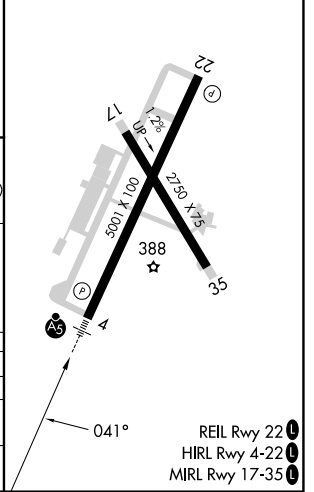
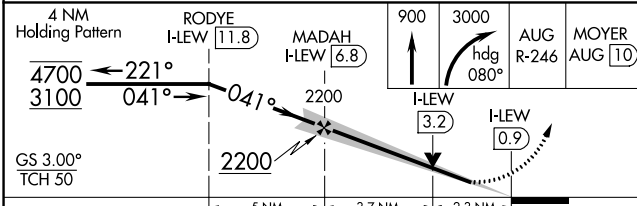
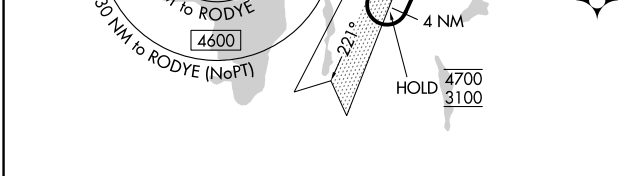
AWOS-3PT 118.025	PORTLAND APP CON ★ 125.5 353.9	CLNC DEL 124.05	UNICOM 122.8 (CTAF) 0
----------------------------	--	---------------------------	---------------------------------



NE-1, 28 NOV 2024 to 26 DEC 2024

NE-1, 28 NOV 2024 to 26 DEC 2024

ELEV 288	TDZE 270
----------	----------



CATEGORY	A	B	C	D
S-ILS 4		470-½	200 (200-½)	
S-LOC 4	1040-½ 770 (800-½)	1040-¾ 770 (800-¾)	1040-1¾ 770 (800-1¾)	770 (800-1¾)
CIRCLING	1040-1 752 (800-1)	1040-1¼ 752 (800-1¼)	1060-2½ 772 (800-2½)	1120-2¾ 832 (900-2¾)

- REIL Rwy 22 0
- HIRL Rwy 4-22 0
- MIRL Rwy 17-35 0