

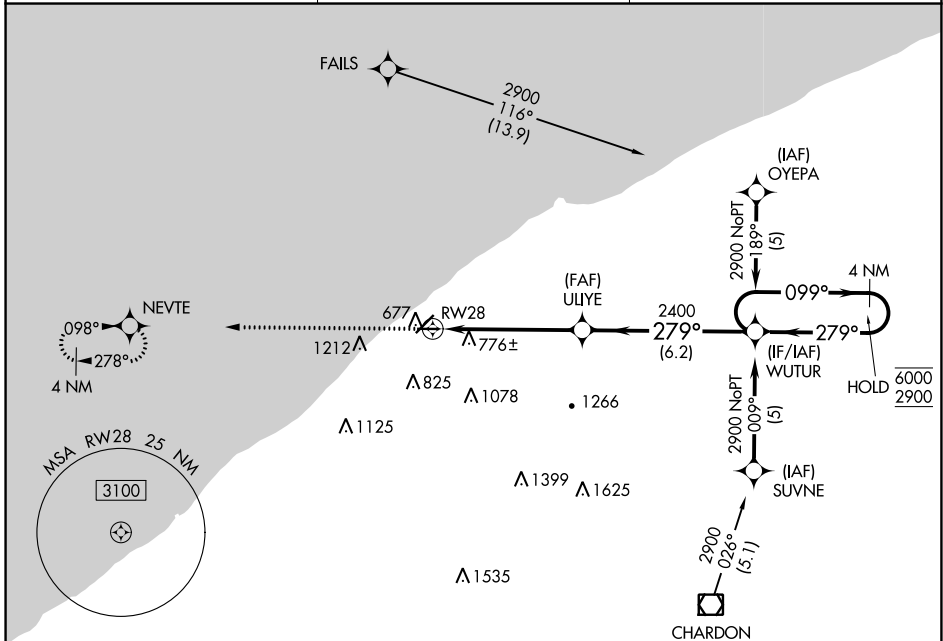
APP CRS	Rwy Idg	<b>3148</b>
<b>279°</b>	TDZE	<b>626</b>
	Apt Elev	<b>626</b>

# RNAV (GPS) RWY 28

LAKE COUNTY EXEC (LNN)

RNP APCH - GPS.	MISSED APPROACH: Climb to 2300 direct NEVTE and hold.
<b>⚠</b> Rwy 28 helicopter visibility reduction below 3/4 SM NA.	

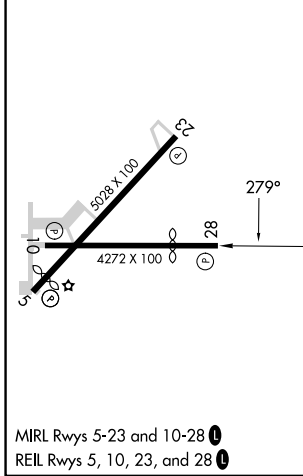
AWOS-3PT <b>119.225</b>	CLEVELAND APP CON <b>125.35 346.325</b>	UNICOM <b>122.725 (CTAF) 0</b>
----------------------------	--	-----------------------------------



EC-2, 28 NOV 2024 to 26 DEC 2024

EC-2, 28 NOV 2024 to 26 DEC 2024

ELEV 626	TDZE 626
----------	----------



2300	NEVTE	VGSI and descent angles not coincident (VGSI Angle 3.50/TCH 26).	WUTUR	4 NM Holding Pattern
			ULIYE	
		1.6 NM to RWY28	2400	6000 / 2900
		≤ 3.04° TCH 40		
		1.6 NM	3.8 NM	6.2 NM
CATEGORY	A	B	C	D
LNAV MDA	1260-1	634 (700-1)	1260-1 3/4 634 (700-1 3/4)	NA
CIRCLING	1260-1	634 (700-1)	1520-2 3/4 894 (900-2 3/4)	NA

WILLOUGHBY, OHIO  
Orig-C 08SEP22

41°41'N-81°23'W

# RNAV (GPS) RWY 28