

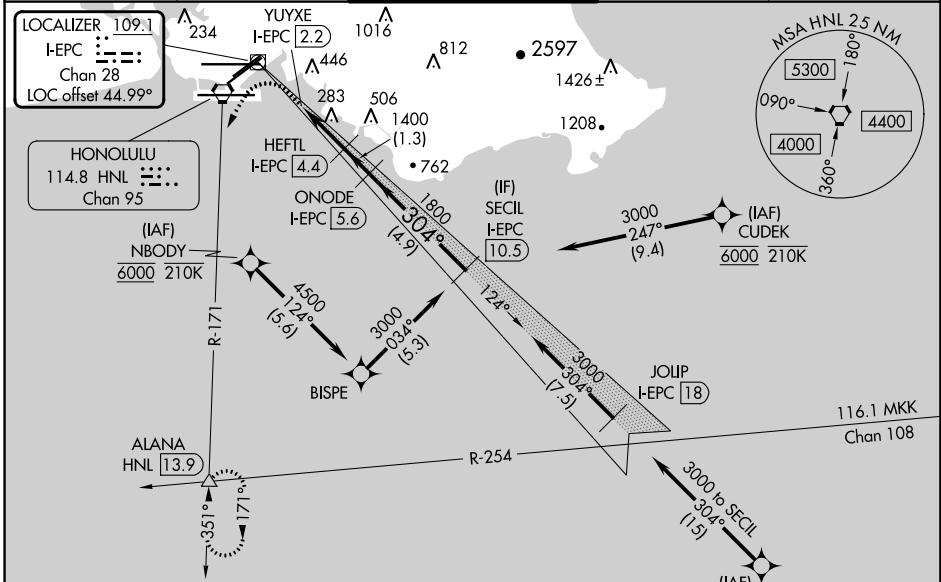
LOC/DME I-EPC 109.1 Chan 28	APP CRS 304°	Rwy Idg TDZE 10 Apt Elev 13
--	------------------------	---

LDA RWY 26L

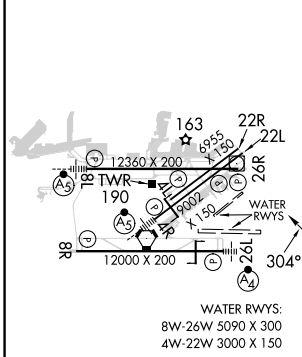
DANIEL K INOUE INTL (HNL) (PHNL)

DME required. From CUDEK, NBODY, SHLAE; RNAV 1-GPS required.		MALSF 	MISSED APPROACH: Climb to 600 then climbing left turn to 3000 on HNL VORTAC R-171 to ALANA INT/HNL 13.9 DME and hold.
NA	Circling Rwy 22R NA at night. Circling NA to sea lanes 4W, 8W, 22W and 26W. NBODY transition, CUDEK transition, SHLAE transition NA for Cat E aircraft. Follow flasher lights to Rwy 26L. Procedure NA when ALS or SFL inop. Circling Cat E NA. Circling NA for Cats A and B northwest of Rwy 8L-22R. Circling NA for Cats C and D north of Rwy 8L-26R.		

D-ATIS 127.9 251.15	HCF APPROACH 118.3 269.0	HONOLULU TOWER 118.1 257.8 123.9 273.575 (Rwy 8R/26L)	GND CON 121.9 348.6	CLNC DEL 121.4 281.4
-------------------------------	------------------------------------	---	-------------------------------	--------------------------------



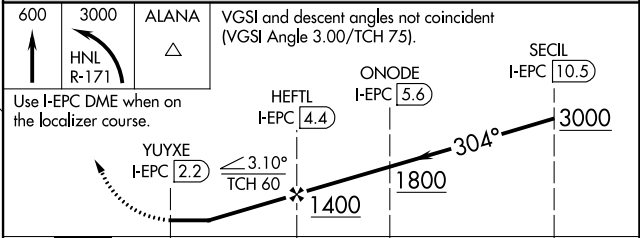
ELEV 13	D	TDZE 10
---------	----------	---------



MIRL Rwy 4L-22R	REIL Rwy 4L, 8R, 22L, 22R, and 26R	HIRL Rwy 4R-22L, 8L-26R, and 8R-26L
-----------------	------------------------------------	-------------------------------------

Procedure NA for arrivals at SAKKI on V16-21 eastbound.

Use I-EPC DME when on the localizer course.



CATEGORY	A	B	C	D	E
S-LDA 26L	600-2 590 (600-2)				
C CIRCLING	680-2¼ 667 (700-2¼)	760-2¼ 747 (800-2¼)	820-2¼ 807 (900-2¼)	1400-3 1387 (1400-3)	NA

PAC, 31 OCT 2024 to 26 DEC 2024

PAC, 31 OCT 2024 to 26 DEC 2024