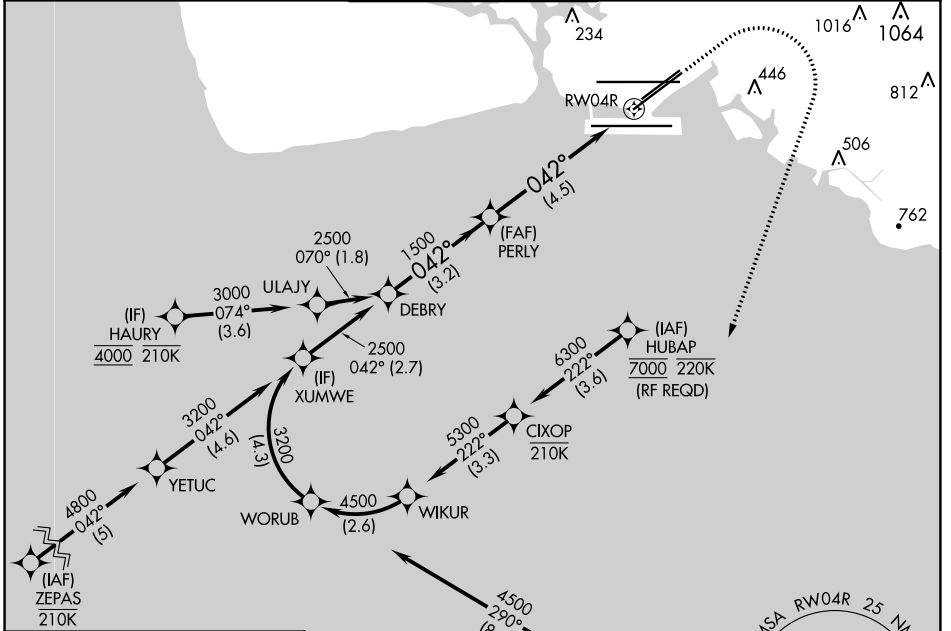


APP CRS	Rwy Idg	<b>8950</b>
<b>042°</b>	TDZE	<b>9</b>
	Apt Elev	<b>13</b>

# RNAV (RNP) Z RWY 4R

DANIEL K INOUEY INTL (HNL) (PHNL)

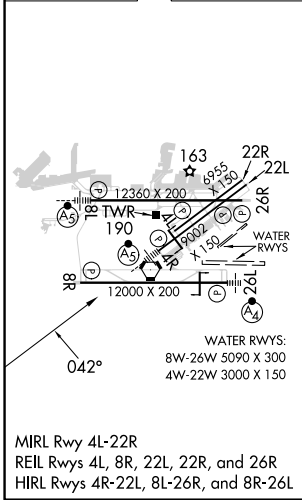
RNP AR APCH.		MALSR	MISSED APPROACH: Climb to 580 then climbing right turn to 3000 direct ALANA and hold.	
▼ For uncompensated Baro-VNAV systems, procedure NA below 17°C or above 54°C. For inop ALS, increase RNP 0.30 Cat A visibility to ¾ SM and Cat B to ½ SM.				
D-ATIS	HCF APPROACH	HONOLULU TOWER	GND CON	CLNC DEL
<b>127.9 251.15</b>	<b>118.3 269.0</b>	<b>118.1 257.8</b> <b>123.9 273.575</b> (Rwy 8R/26L)	<b>121.9 348.6</b>	<b>121.4 281.4</b>



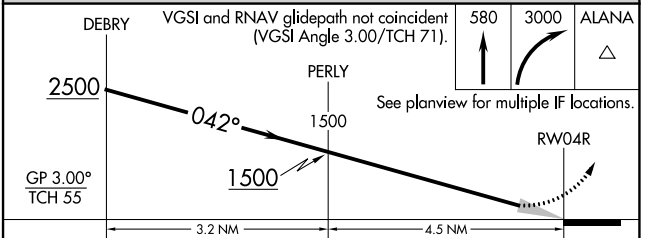
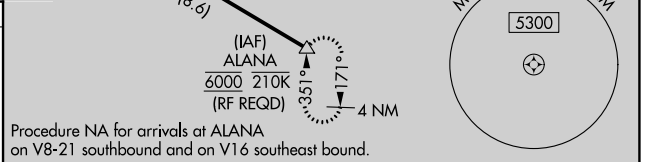
PAC, 31 OCT 2024 to 26 DEC 2024

PAC, 31 OCT 2024 to 26 DEC 2024

ELEV	<b>13</b>	<b>D</b>	TDZE	<b>9</b>
------	-----------	----------	------	----------



MIRL Rwy 4L-22R  
REIL Rwys 4L, 8R, 22L, 22R, and 26R  
HIRL Rwys 4R-22L, 8L-26R, and 8R-26L



GP 3.00° TCH 55	VGS1 and RNAV glidepath not coincident (VGS1 Angle 3.00/TCH 71).		580	3000	ALANA
			↑	↷	△
	See planview for multiple IF locations.				
CATEGORY	A	B	C	D	
RNP 0.30 DA	259-½ 250 (300-½)	277-½ 268 (300-½)	432-¾	423 (500-¾)	

### AUTHORIZATION REQUIRED