

SAITO TWO DEPARTURE (SAITO2•SAITO)

AL-754 [USAF]

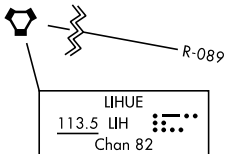
HONOLULU, HAWAII

DME required

D-ATIS
 127.9 251.15
 CLNC DEL
 121.4 281.4
 GND CON
 121.9 348.6

HONOLULU TOWER
 118.1 257.8
 123.9 273.575
 (Rwy 8R - 26L)

HCF APP
 118.3 317.6
 N119.1 265.0
 W118.3 269.0

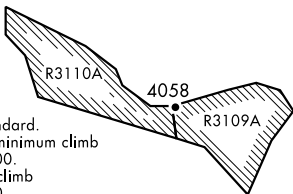


NOT FOR CIVIL USE

**TOP ALTITUDE:
7000**

CAUTION: Large ships operating in channel waters surrounding HNL airport.

Terrain in heights to 2200 occur within 5 NM.



TAKEOFF MINIMUMS

Rwy 22L/R, 26L/R: Standard.
 Rwy 8L: Standard with minimum climb of 305 ft per NM to 1300.
 Rwy 8R: Standard with climb of 296 ft per NM to 500.

TAKEOFF OBSTACLES

Rwy 22L: Tree 582' from DER, 472' right of centerline, 31' MSL/23' AGL.
 Rwy 22R: Tower 1451' from DER, 827' right of centerline, 84' MSL/81' AGL.

Departure from Rwy 8L/R:

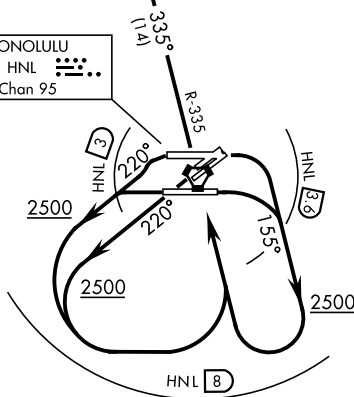
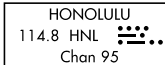
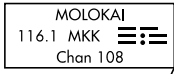
Right turn to heading 155° must be completed within 2 NM of departure end of rwy (HNL VORTAC 3.6 DME).
 Leaving 2500 and right turn to intercept HNL VORTAC R-335 must be completed within 8 DME.

Departure from Runways 22L/R:

Leaving 2500 and left turn to intercept HNL VORTAC R-335 must be completed within 8 DME.

Departure from Rwy 26L/R:

Left turn to heading 220° must be completed within 2 NM of departure end of rwy (HNL VORTAC 3 DME).
 Leaving 2500 and left turn to intercept HNL VORTAC R-335 must be completed within 8 DME.



DEPARTURE ROUTE DESCRIPTION

TAKEOFF RUNWAYS 8L/R: Climbing right turn heading 155° to 2500, then climbing right turn to HNL VORTAC and on HNL R-335 to cross MELLO at 5000. Thence....

TAKEOFF RUNWAYS 22L/R: Climb heading 220° to 2500, then climbing left turn to HNL VORTAC and on HNL R-335 to cross MELLO at 5000. Thence....

TAKEOFF RUNWAYS 26L/R: Climbing left turn heading 220° to 2500, then climbing left turn to HNL VORTAC and on HNL R-335 to cross MELLO at 5000. Thence....

... continue on HNL R-335 to cross SAITO at 7000, expect clearance to enroute altitude at SAITO.

SAITO TWO DEPARTURE (SAITO2•SAITO)

HONOLULU, HAWAII