

(SYMIN.SYMIN1) 20030

# SYMIN ONE ARRIVAL (RNAV)

AL-754 (FAA)

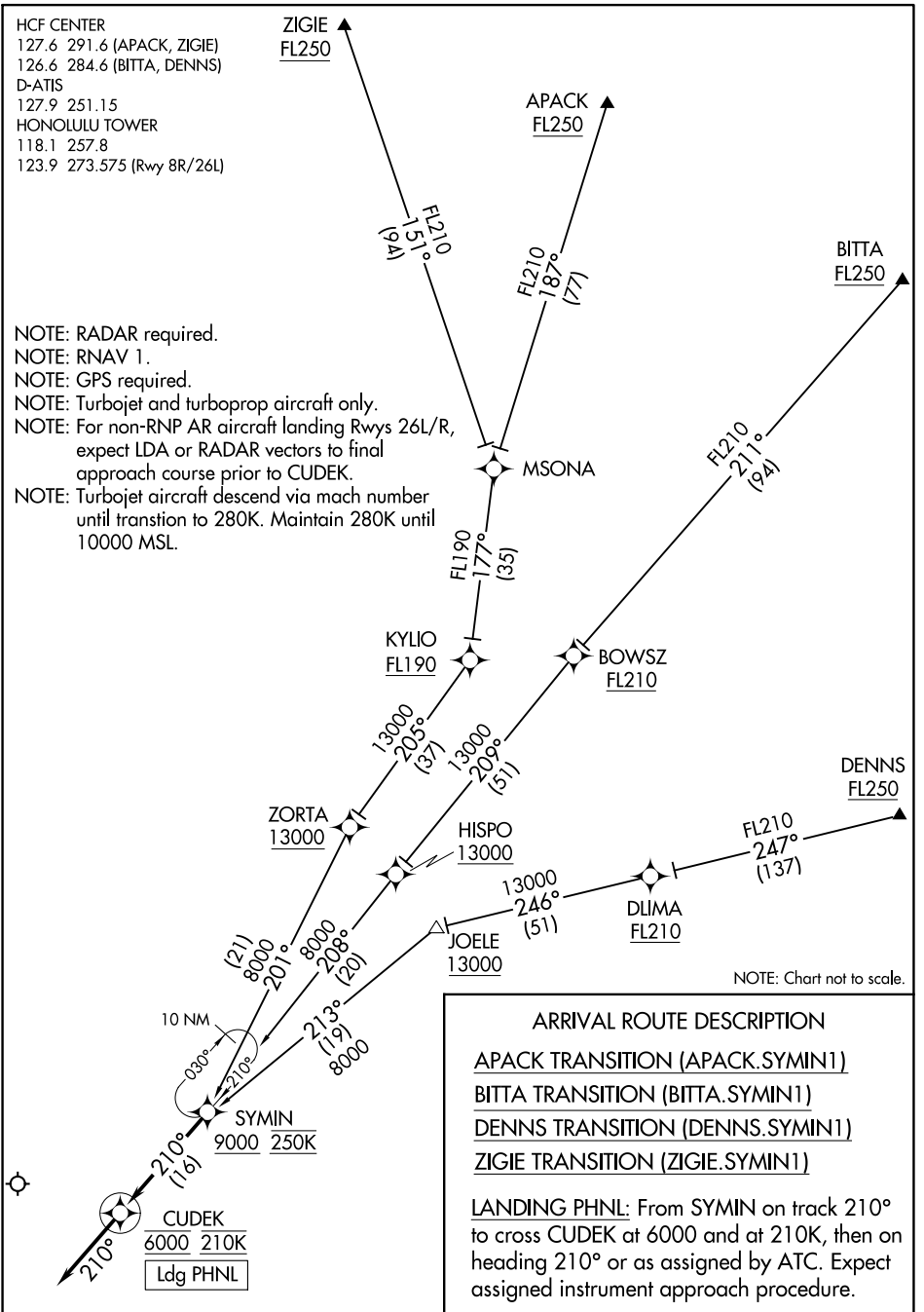
DANIEL K INOUYE INTL (HNL) (PHNL)  
HONOLULU, HAWAII

HCF CENTER  
127.6 291.6 (APACK, ZIGIE)  
126.6 284.6 (BITTA, DENNS)  
D-ATIS  
127.9 251.15  
HONOLULU TOWER  
118.1 257.8  
123.9 273.575 (Rwy 8R/26L)

- NOTE: RADAR required.
- NOTE: RNAV 1.
- NOTE: GPS required.
- NOTE: Turbojet and turboprop aircraft only.
- NOTE: For non-RNP AR aircraft landing Rwy 26L/R, expect LDA or RADAR vectors to final approach course prior to CUDEK.
- NOTE: Turbojet aircraft descend via mach number until transtion to 280K. Maintain 280K until 10000 MSL.

PAC, 31 OCT 2024 to 26 DEC 2024

PAC, 31 OCT 2024 to 26 DEC 2024



# SYMIN ONE ARRIVAL (RNAV)

(SYMIN.SYMIN1) 30JAN20

HONOLULU, HAWAII  
DANIEL K INOUYE INTL (HNL) (PHNL)