

HILO, HAWAII

AL-756 (FAA)

24025

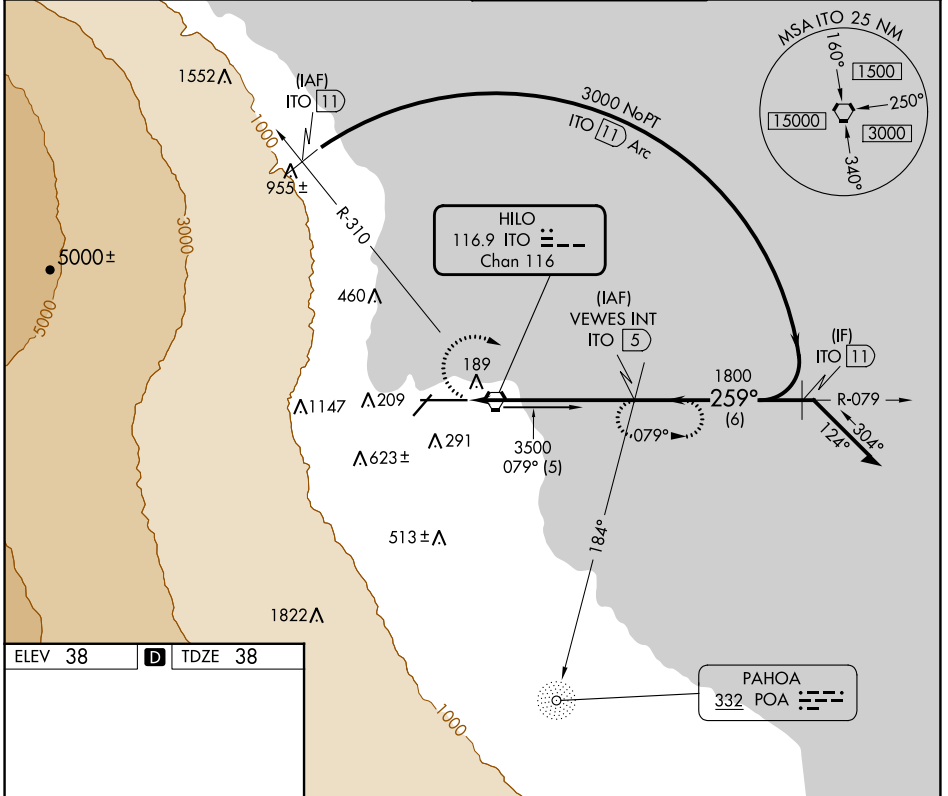
VORTAC ITO 116.9 Chan 116	APP CRS 259°	Rwy Idg 9800 TDZE 38 Apt Elev 38
---	------------------------	---

VOR/DME or TACAN RWY 26

HILO INTL (ITO) (PHTO)

	For inop ALS, increase S-26 Cat A/B visibility to 1 SM and Cat D to 1 1/4 SM. Circling NA south of Rwy 8-26. Helicopter visibility reduction below 3/4 SM NA.		MISSED APPROACH: Climbing right turn to 3000 on ITO VORTAC R-079 to VEVES/5 DME and hold.

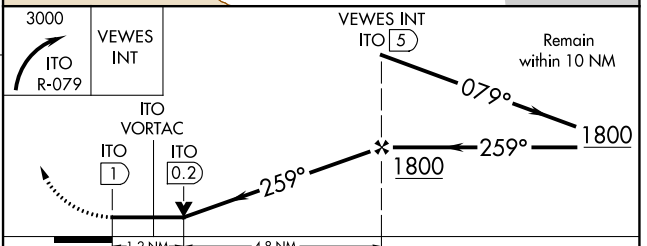
ATIS 126.4	HILO APP CON* 119.7 269.2	HILO TOWER* 118.1(CTAF) 263.1	GND CON 121.9
----------------------	-------------------------------------	---	-------------------------



ELEV 38	D	TDZE 38
---------	----------	---------

9800 X 150, 26, 259°, TWX 164, 3000, 2000, 1500, 1000, 500

REIL Rwy 3
MIRL Rwy 3-21
HIRL Rwy 8-26



CATEGORY	A	B	C	D
S-26	460-3/4 422 (500-3/4)			460-1 422 (500-1)
C CIRCLING	500-1 462 (500-1)	540-1 502 (600-1)	840-2 1/4 802 (900-2 1/4)	1320-3 1282 (1300-3)

HILO, HAWAII
Amdt 5E 16JUL20

19°43'N-155°03'W

HILO INTL (ITO) (PHTO)

VOR/DME or TACAN RWY 26

PAC, 31 OCT 2024 to 26 DEC 2024

PAC, 31 OCT 2024 to 26 DEC 2024