

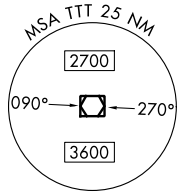
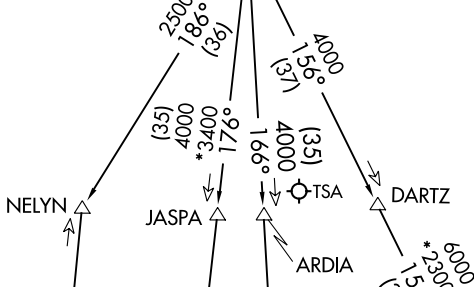
JOE POOL SEVEN DEPARTURE

LONE STAR DEP CON
124.3 282.275
ATIS
133.4
CLNC DEL
119.55
GND CON
121.6
ADDISON TOWER*
126.0 (CTAF) 239.0

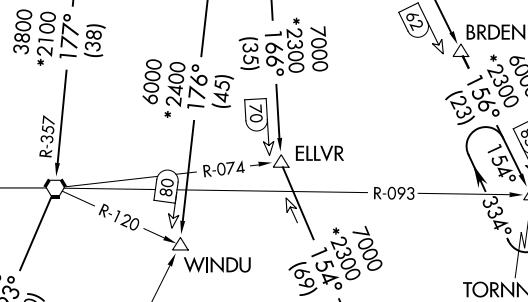
RADAR and DME required.

**TOP ALTITUDE:
ASSIGNED BY ATC**

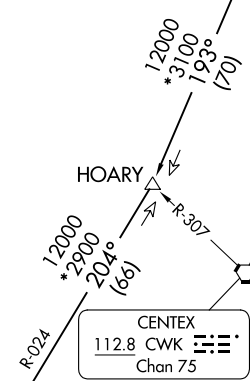
MAVERICK
113.1 TTT
Chan 78



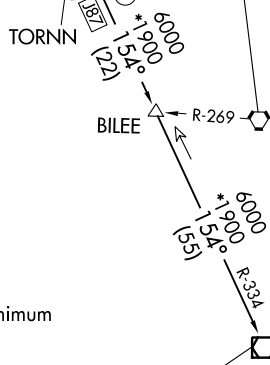
WACO
115.3 ACT
Chan 100



LEONA
110.8 LOA
Chan 45



COLLEGE STATION
113.3 CLL
Chan 80



TAKEOFF MINIMUMS
 Rwy 34: Standard.
 Rwy 16: 400-2½ or standard with minimum
 climb of 325'/NM to 1100.

(CONTINUED ON FOLLOWING PAGE)

NOTE: Chart not to scale.

SC-2, 28 NOV 2024 to 26 DEC 2024

SC-2, 28 NOV 2024 to 26 DEC 2024

JOE POOL SEVEN DEPARTURE