

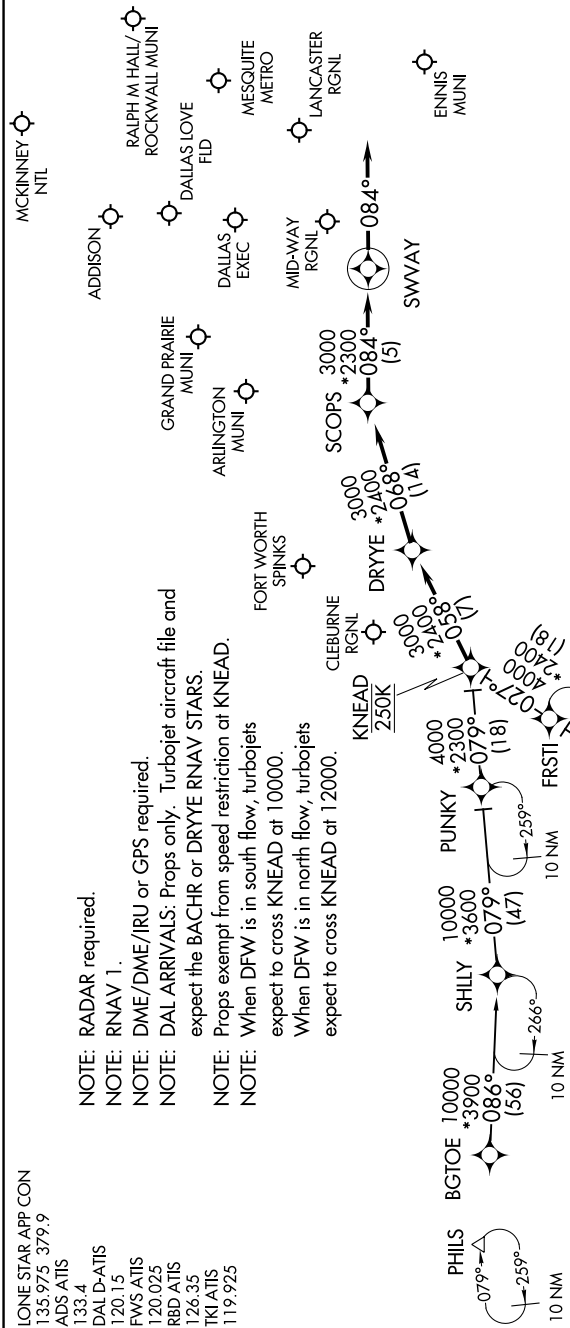
# SWVAY FOUR ARRIVAL (RNAV)

DALLAS, TEXAS

SC-2, 28 NOV 2024 to 26 DEC 2024

LONE STAR APP CON  
 135.975 379.9  
 ADS ATIS  
 133.4  
 DAL D-ATIS  
 120.15  
 FWS ATIS  
 120.025  
 RBD ATIS  
 124.35  
 TKI ATIS  
 119.925

NOTE: RADAR required.  
 NOTE: RNAV 1.  
 NOTE: DME/DME/IRU or GPS required.  
 NOTE: DAL ARRIVALS: Props only. Turbojet aircraft file and expect the BACHR or DRYYE RNAV STARS.  
 NOTE: Props exempt from speed restriction at KNEAD.  
 NOTE: When DFW is in south flow, turbojets expect to cross KNEAD at 10000.  
 NOTE: When DFW is in north flow, turbojets expect to cross KNEAD at 12000.



## ARRIVAL ROUTE DESCRIPTION

**BGTOE TRANSITION (BGTOE.SWVAY4)**  
**DITSY TRANSITION (DITSY.SWVAY4)**  
**FRSTI TRANSITION (FRSTI.SWVAY4):** (For ACT and GRK Terminal Area departures only).  
**SHILLY TRANSITION (SHILLY.SWVAY4):** (For ABI Terminal Area departures only).

From KNEAD on track 058° to DRYYE, then on track 068° to SCOPES, then on track 084° to SWVAY, then on track 084°. Expect RADAR vectors to final approach course.

NOTE: Chart not to scale.

# SWVAY FOUR ARRIVAL (RNAV)

DALLAS, TEXAS

SC-2, 28 NOV 2024 to 26 DEC 2024