


LOC/DME I-LIH 110.9 Chan 46	APP CRS 349°	Rwy Idg TDZE Apt Elev	6500 96 152
--	------------------------	-----------------------------	--

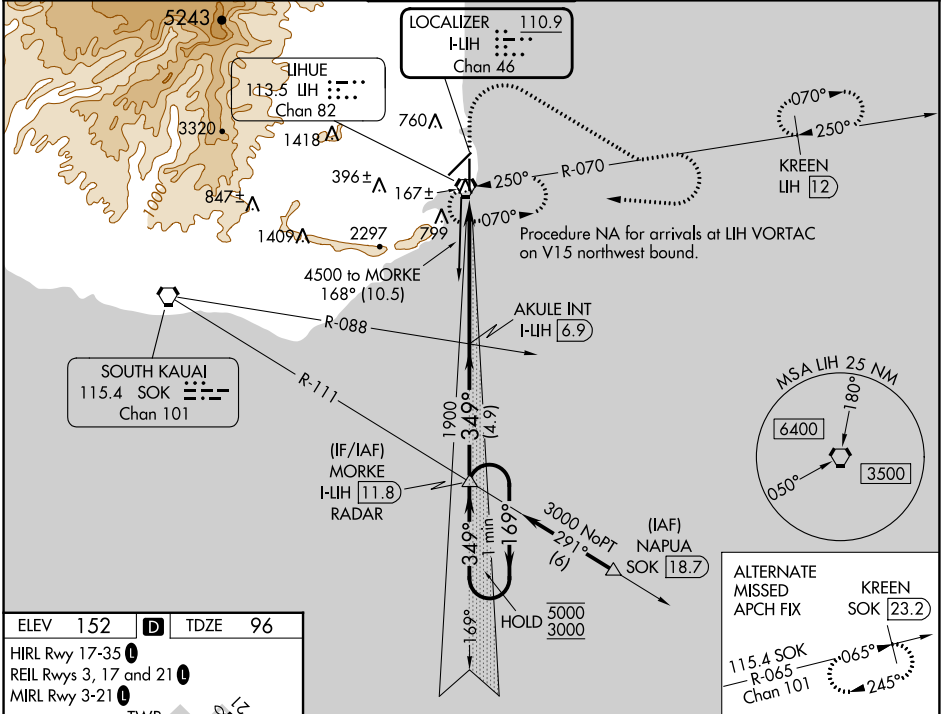
ILS or LOC RWY 35

LIHUE (LIH)(PHLI)

⚠ Circling NA at night. Circling NA west of Rwy 17-35. For inop ALS, increase S-ILS 35 Cat E visibility to ¾ SM and increase S-LOC 35 Cat E visibility to 1 SM.

MALS  MISSED APPROACH: Climb to 600 then climbing right turn to 3000 on heading 110° and LIH VORTAC R-070 then climbing right turn to 4000 direct LIH VORTAC and hold. (TACAN or DME equipped aircraft continue on LIH VORTAC R-070 to KREEN/LIH VORTAC 12 DME and hold, east, RT, 250° inbound, continue climb-in-hold to 3000).





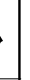
ATIS 127.2	HCF CENTER 126.5 269.4	LIHUE TOWER* 118.9(CTAF) 263.1	GND CON 121.9	CLNC DEL 126.5 269.4 (When twr closed)
----------------------	----------------------------------	--	-------------------------	---



ELEV 152	D	TDZE 96
HIRL Rwy 17-35		
REIL Rwy 3, 17 and 21		
MIRL Rwy 3-21		
TWR 198		
5500 X 150		
5900 X 150		
349°		
A5		

FAF to MAP 5.5 NM

Knots	60	90	120	150	180
Min:Sec	5:30	3:40	2:45	2:12	1:50

One Minute Holding Pattern	600	3000	4000	LIH	LIH
					
MORKE I-LIH 11.8 RADAR	AKULE INT I-LIH 6.9	LIH R-070	LIH	LIH	
5000 ← 169°	3000 ← 349°	1900	LIH 2.2	LIH 1.4	
GS 3.00°	TCH 55	1900			
		4.9 NM	4.7 NM	0.9	
CATEGORY	A	B	C	D	E
S-ILS 35		296-½	200 (200-½)		
S-LOC 35		420-½	324 (300-½)		
C CIRCLING	520-1 368 (400-1)	620-1 468 (500-1)	620-1½ 468 (500-1½)	720-2 568 (600-2)	740-2 588 (600-2)

ILS or LOC RWY 35

LIHUE (LIH)(PHLI)