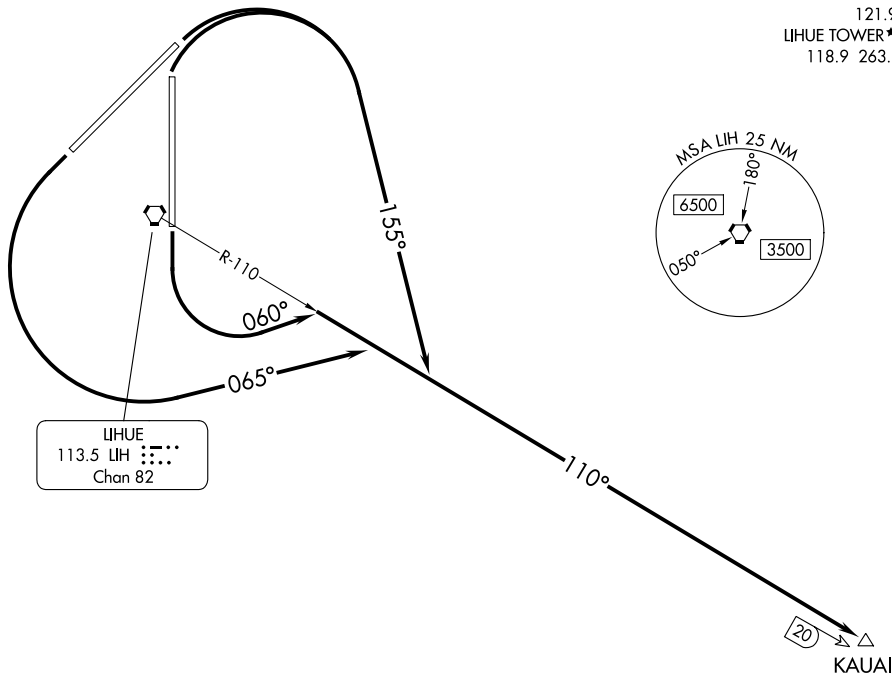


DME required.

HCF CENTER
 126.5 269.4
 ATIS
 127.2
 GND CON
 121.9
 LIHUE TOWER*
 118.9 263.1



LIHUE
 113.5 LIH : : : :
 Chan 82

TAKEOFF MINIMUMS

Rwys 3, 17, 35: Standard

Rwy 21: Standard with minimum climb of 720'/NM to 2100 or 4900-3 for VCOA.

NOTE: Rwy 21: Obtain ATC approval for VCOA when requesting IFR clearance. Climb in visual conditions to cross Lihue Airport at or above 4900 before proceeding on course.

NOTE: Chart not to scale.

(CONTINUED ON FOLLOWING PAGE)

DEPARTURE ROUTE DESCRIPTION

TAKEOFF RUNWAY 3: Climbing right turn to heading 155° thence. . . .

TAKEOFF RUNWAY 17: Climbing left turn to heading 060° thence. . . .

TAKEOFF RUNWAY 21: Climbing left turn to heading 065° thence. . . .

TAKEOFF RUNWAY 35: Climbing right turn to heading 155° thence. . . .

. . . .intercept LIH VORTAC R-110 eastbound to KAUAI/LIH 20 DME before proceeding on course.