

(RICHE3.BOOKE) 24025

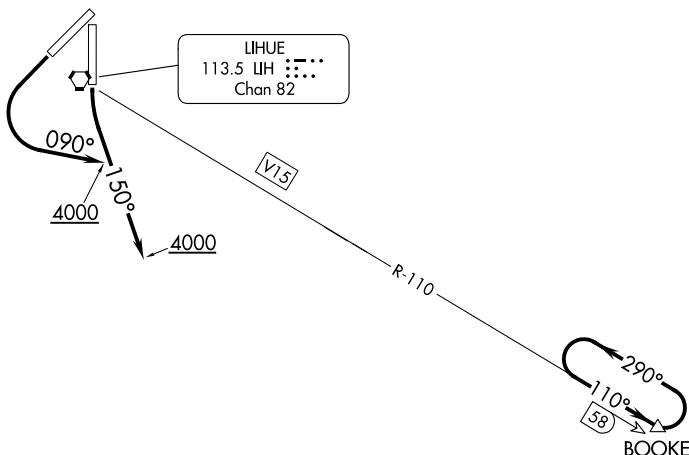
RICHE THREE DEPARTURE

AL-776 (FAA)

LIHUE (LIH)(PHLI)
LIHUE, HAWAII

HCF CENTER
126.5 269.4

**TOP ALTITUDE:
ASSIGNED BY ATC**



TAKEOFF MINIMUMS

Rwy 17: Standard.

Rwy 21: Standard with minimum climb of 720' per NM to 2100.

NOTE: RADAR required.

NOTE: DME required.

NOTE: Chart not to scale.



DEPARTURE ROUTE DESCRIPTION

TAKEOFF RUNWAY 17: Climbing left turn heading 150° to 4000, thence

TAKEOFF RUNWAY 21: Climbing left turn heading 090° to 4000, thence

. . . .Expect RADAR vectors to intercept LIH VORTAC R-110 eastbound to BOOKE/LIH 58 DME fix, maintain ATC assigned altitude. Expect clearance to filed altitude/flight level 10 minutes after departure.

LOST COMMUNICATIONS: If not in contact with HCF 1 minute after departure maintain SID heading until 10 NM east of LIH VORTAC, then intercept LIH R-110 to BOOKE DME fix.

RICHE THREE DEPARTURE

(RICHE3.BOOKE) 23FEB23

LIHUE, HAWAII
LIHUE (LIH)(PHLI)

PAC, 31 OCT 2024 to 26 DEC 2024

PAC, 31 OCT 2024 to 26 DEC 2024