


APP CRS	Rwy Idg	<b>6500</b>
<b>349°</b>	TDZE	<b>96</b>
	Apt Elev	<b>153</b>

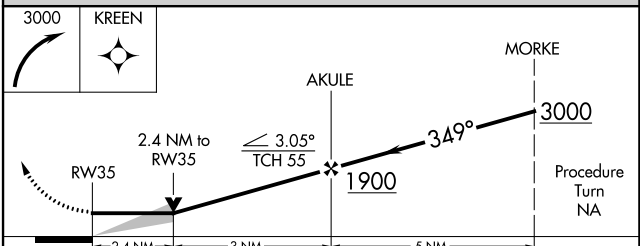
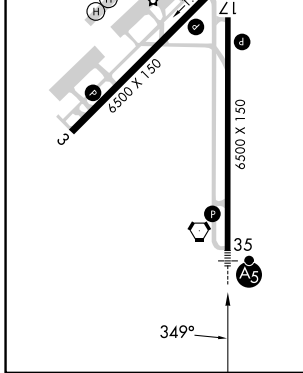
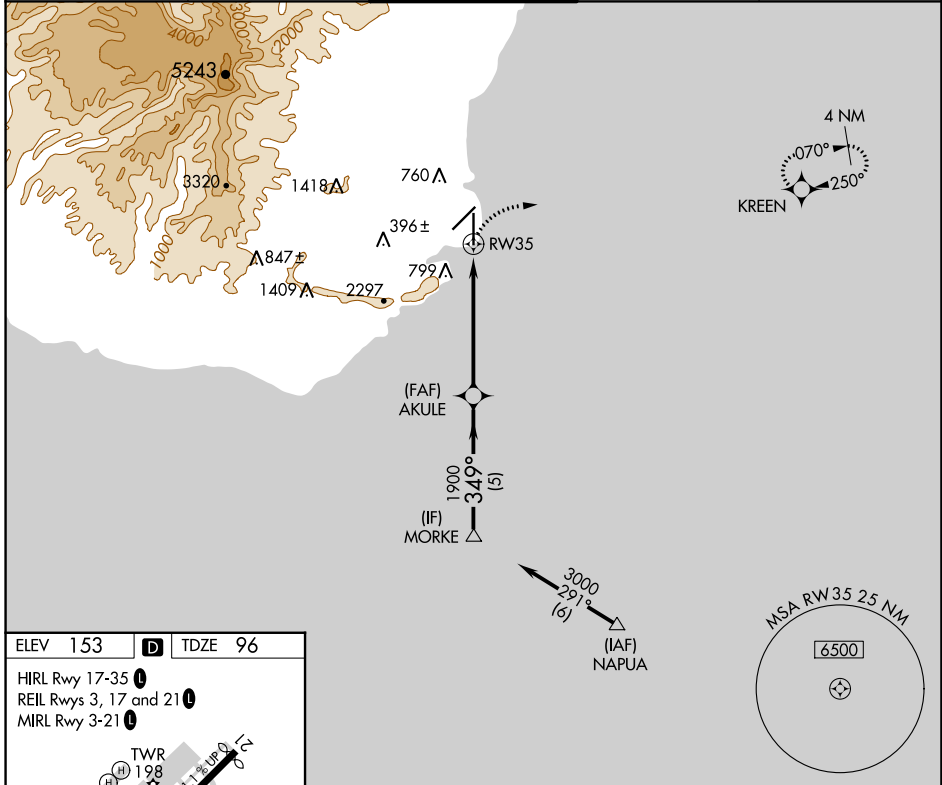
# RNAV (GPS) Y RWY 35

LIHUE (LIH)(PHLI)

**⚠** For inoperative MALSR, increase LNAV Cat A visibility to 1 mile and Cat E to 3 miles. Circling NA west of Rwy 17-35. Circling NA at night. DME/DME RNP-0.3 NA.

**MALSR**  
  
**MISSED APPROACH:** Climbing right turn to 3000 direct KREEN WP and hold.

ATIS <b>127.2</b>	HCF CENTER <b>126.5 269.4</b>	LIHUE TOWER★ <b>118.9 (CTAF) 263.1</b>	GND CON <b>121.9</b>	CLNC DEL <b>126.5 269.4</b> (When twr closed)
----------------------	----------------------------------	---	-------------------------	---



CATEGORY	A	B	C	D	E
LNAV MDA	920- <sup>3</sup> / <sub>4</sub>	824 (800- <sup>3</sup> / <sub>4</sub> )	920-2	920-2 <sup>1</sup> / <sub>4</sub>	920-2 <sup>1</sup> / <sub>2</sub>
CIRCLING	920-1	920-1 <sup>1</sup> / <sub>4</sub>	920-2 <sup>1</sup> / <sub>4</sub>	920-2 <sup>1</sup> / <sub>2</sub>	NA
	767 (800-1)	767 (800-1 <sup>1</sup> / <sub>4</sub> )	767 (800-2 <sup>1</sup> / <sub>4</sub> )	767 (800-2 <sup>1</sup> / <sub>2</sub> )	

PAC, 31 OCT 2024 to 26 DEC 2024

PAC, 31 OCT 2024 to 26 DEC 2024