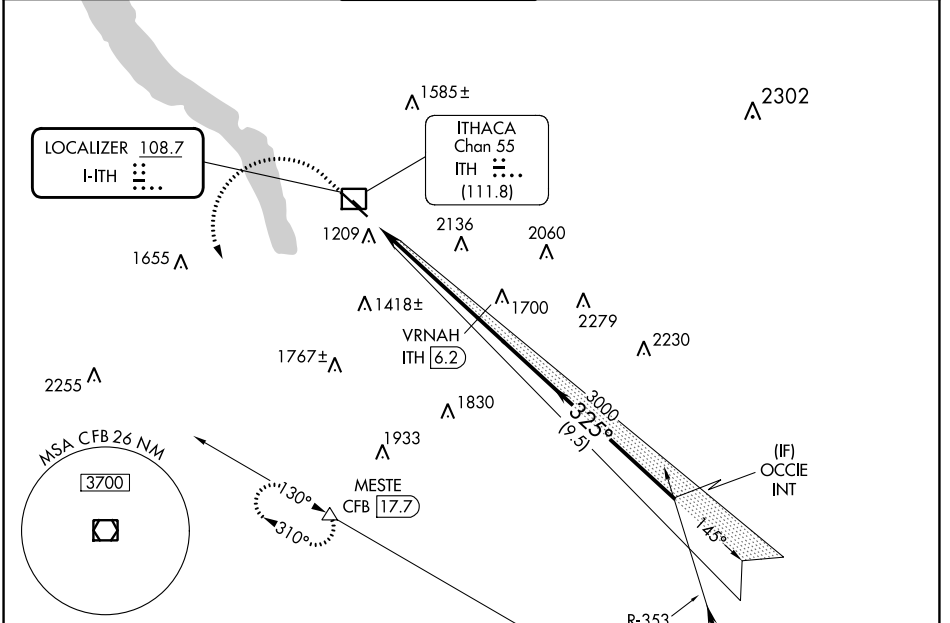


LOC I-ITH 108.7	APP CRS 325°	Rwy ldg 6602
		TDZE 1099
		Apt Elev 1099

ILS or LOC RWY 32

ITHACA TOMPKINS INTL (ITH)

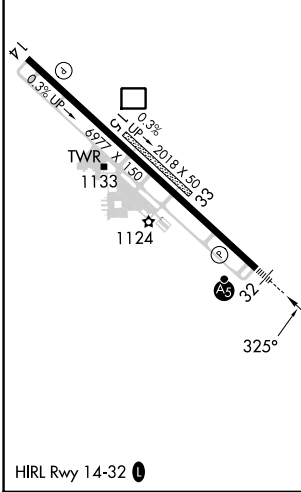
DME required.		MALSR		MISSED APPROACH: Climb to 2600 then climbing left turn to 4000 on heading 180° and CFB VOR/DME R-310 to MESTE/CFB VOR/DME 17.7 DME and hold.			
Circling NA to Rws 15 and 33. Inop table does not apply to S-ILS 32. DME from ITH DME. Simultaneous reception of I-ITH LOC and ITH DME required. -19°C		ATIS 125.175	ELMIRA APP CON ★ 124.3 257.8	ITHACA TOWER ★ 119.6 (CTAF)	GND CON 121.8	CLNC DEL 121.8	UNICOM 122.95



NE-2, 28 NOV 2024 to 26 DEC 2024

NE-2, 28 NOV 2024 to 26 DEC 2024

ELEV 1099	D	TDZE 1099
-----------	----------	-----------



Procedure NA for arrival on CFB VOR/DME airway radials 310 CW 015 and V374 northwest bound.

2600	4000	CFB R-310	MESTE	OCCIE INT
↑	hdg 180°			
		VRNAH ITH 6.2		
		ITH 0.8	3000	3400
		2.9 NM	2.6 NM	9.5 NM
CATEGORY	A	B	C	D
S-ILS 32	1349/24		250 (300-1/2)	
S-LOC 32	2140/40 1041 (1100-3/4)	2140/55 1041 (1100-1)	2140-2 1/2 1041 (1100-2 1/2)	
C CIRCLING	2140-1 1/4 1041 (1100-1 1/4)	2140-1 1/2 1041 (1100-1 1/2)	2140-3 1041 (1100-3)	2440-3 1341 (1400-3)

GS 3.20°
TCH 54