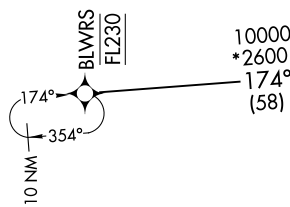


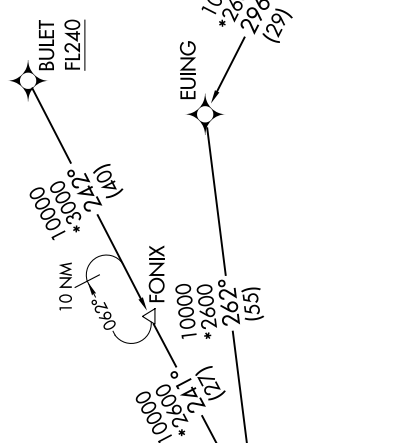
RUDDH THREE ARRIVAL (RNAV) Transition Routes

KANSAS CITY APP CON
120.95 318.1
D-ATIS
128.375

RNAV 1 - DME/DME/IRU or GPS.
RADAR required.



See following page for arrival routes



NOTE: Expect runway assignment from Kansas City TRACON upon initial contact.

- BLWRS TRANSITION (BLWRS.RUDDH3)
- BULET TRANSITION (BULET.RUDDH3)
- EIJING TRANSITION (EIJING.RUDDH3)
- LAPOW TRANSITION (LAPOW.RUDDH3)

NOTE: Chart not to scale.

(CONTINUED ON FOLLOWING PAGE)