

|  |                        |                             |   |
|--|------------------------|-----------------------------|---|
| VOR/DME BLF<br><b>115.05</b><br>Chan <b>97</b> (Y) | APP CRS<br><b>225°</b> | Rwy Idg<br>TDZE<br>Apt Elev | <b>4743</b><br><b>2857</b><br><b>2857</b> |
|--|------------------------|-----------------------------|---|

# VOR RWY 23

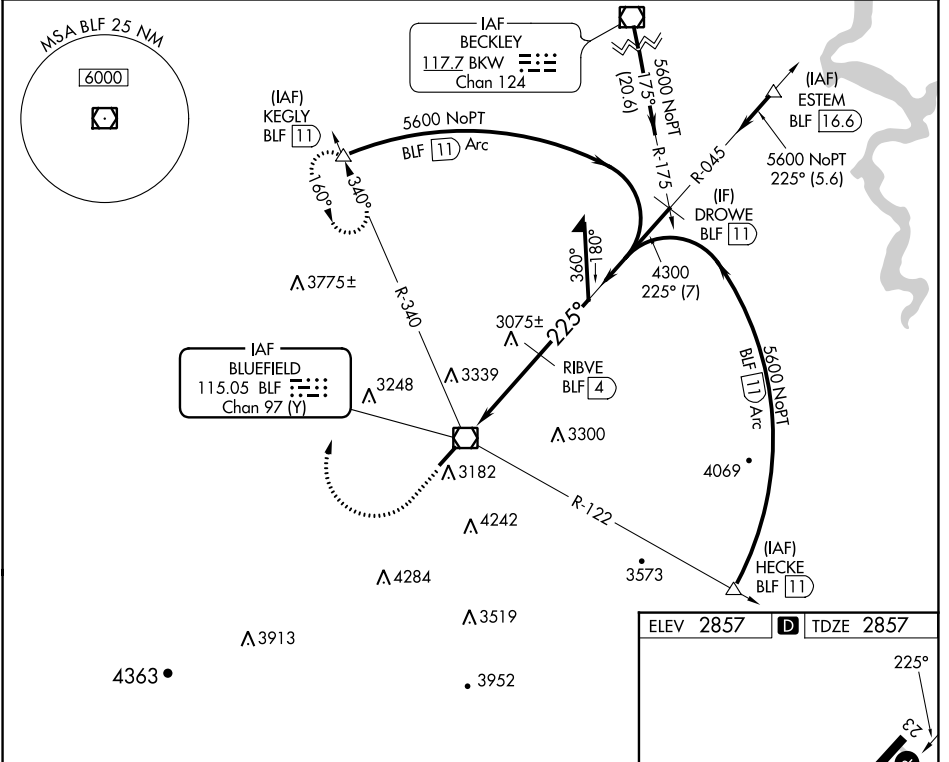
MERCER COUNTY (BLF)

DME required.

When local altimeter setting not received, use Beckley altimeter setting and increase all MDAs 460 feet: increase S-23 visibility Cat A ¼ SM, Cat B ½ SM, Cat C 1 ½ SM, Cat D 1 ¼ SM; increase Circling visibility Cat A ¼ SM, Cat B ½ SM, Cat C ¾ SM. VDP NA when using Beckley altimeter setting. Circling NA southeast of Rwy 5-23.

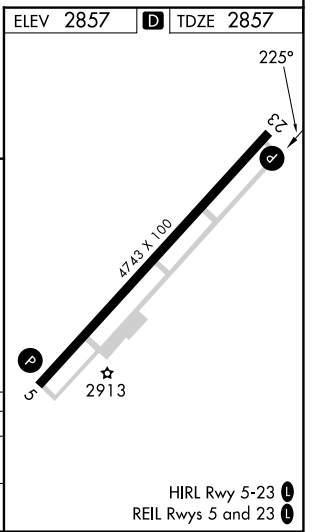
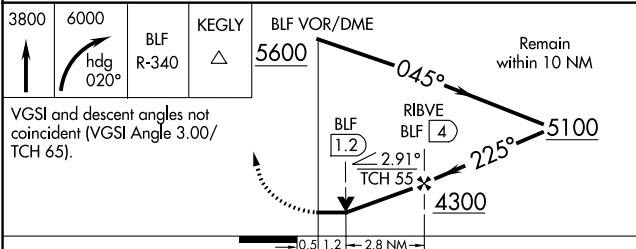
MISSED APPROACH: Climb to 3800 then climbing right turn to 6000 on heading 020° and BLF R-340 to KEGLY/BLF 11 DME and hold.

|                        |  |                      |
|------------------------|--|----------------------|
| ASOS<br><b>132.725</b> | INDIANAPOLIS CENTER<br><b>126.575 257.85</b> | CTAF<br><b>122.9</b> |
|------------------------|--|----------------------|



NE-4, 28 NOV 2024 to 26 DEC 2024

NE-4, 28 NOV 2024 to 26 DEC 2024



| CATEGORY | A                     | B                     | C                         | D                         |
|----------|-----------------------|-----------------------|---------------------------|---------------------------|
| S-23     | 3440-1                | 583 (600-1)           | 3440-1 ½<br>583 (600-1 ½) | 3440-1 ¾<br>583 (600-1 ¾) |
| CIRCLING | 3440-1<br>583 (600-1) | 3460-1<br>603 (700-1) | 3640-2 ¼<br>783 (800-2 ¼) | 3780-3<br>923 (1000-3)    |