

WAAS CH <b>82023</b> <b>W10A</b>	APP CRS <b>103°</b>	Rwy Idg <b>5001</b> TDZE <b>2502</b> Apt Elev <b>2504</b>
--	------------------------	---

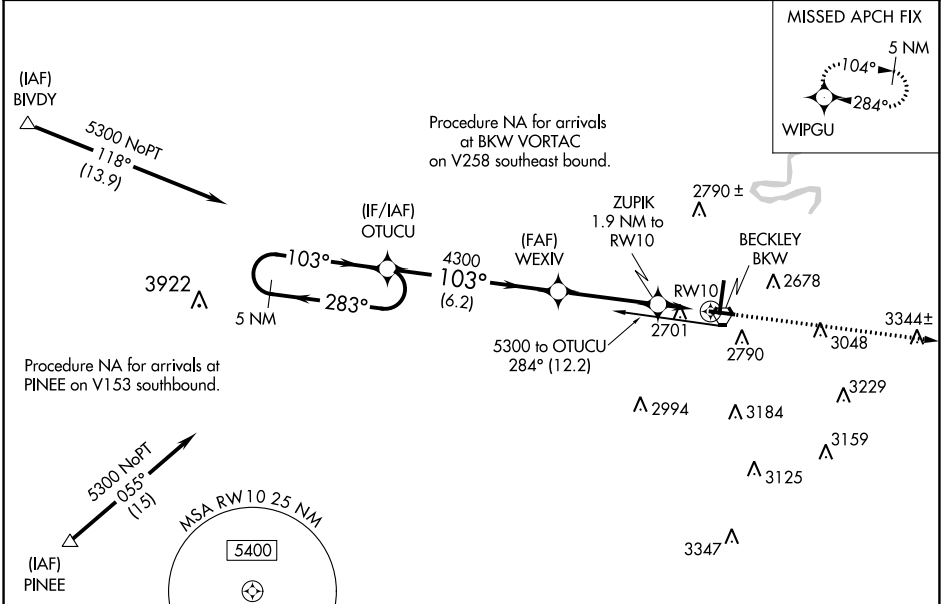
# RNAV (GPS) RWY 10

RALEIGH COUNTY MEML (BKW)

**▼** For uncompensated Baro-VNAV systems, LNAV/VNAV NA below -19°C (-2°F) or above 28°C (82°F).  
**▲** DME/DME RNP-0.3 NA. VDP and Baro-VNAV NA when using Bluefield altimeter setting. When local altimeter not received, use Bluefield altimeter setting and increase all DA 118 feet and all MDA 120 feet; increase LPV all Cats visibility ¼ SM, LNAV/VNAV all Cats visibility ½ SM, LNAV Cat C/D visibility ⅓ SM, and Circling Cat C visibility ¼ SM.

**MISSED APPROACH:**  
Climb to 5700 direct WIPGU and hold.

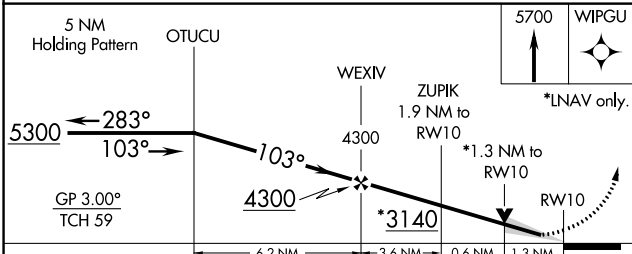
ASOS <b>121.55</b>	CHARLESTON APP CON <b>125.4 269.125</b>	UNICOM <b>123.0 (CTAF) 0</b>
-----------------------	--	---------------------------------



NE-4, 28 NOV 2024 to 26 DEC 2024

NE-4, 28 NOV 2024 to 26 DEC 2024

ELEV 2504	<b>D</b> TDZE 2502
-----------	--------------------



CATEGORY	A	B	C	D
LPV DA		2702-¾	200 (200-¾)	
LNAV/VNAV DA		3016-1¾	514 (500-1¾)	
LNAV MDA	2960-1	458 (500-1)	2960-1¾	458 (500-1¾)
<b>C</b> CIRCLING	3120-1 616 (700-1)	3180-1 676 (700-1)	3320-2½ 816 (900-2½)	3500-3 996 (1000-3)

