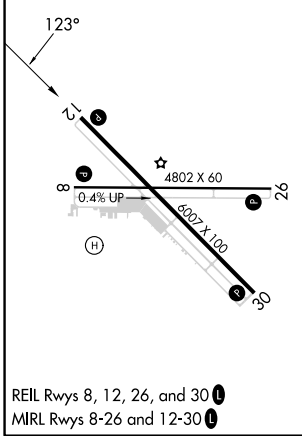
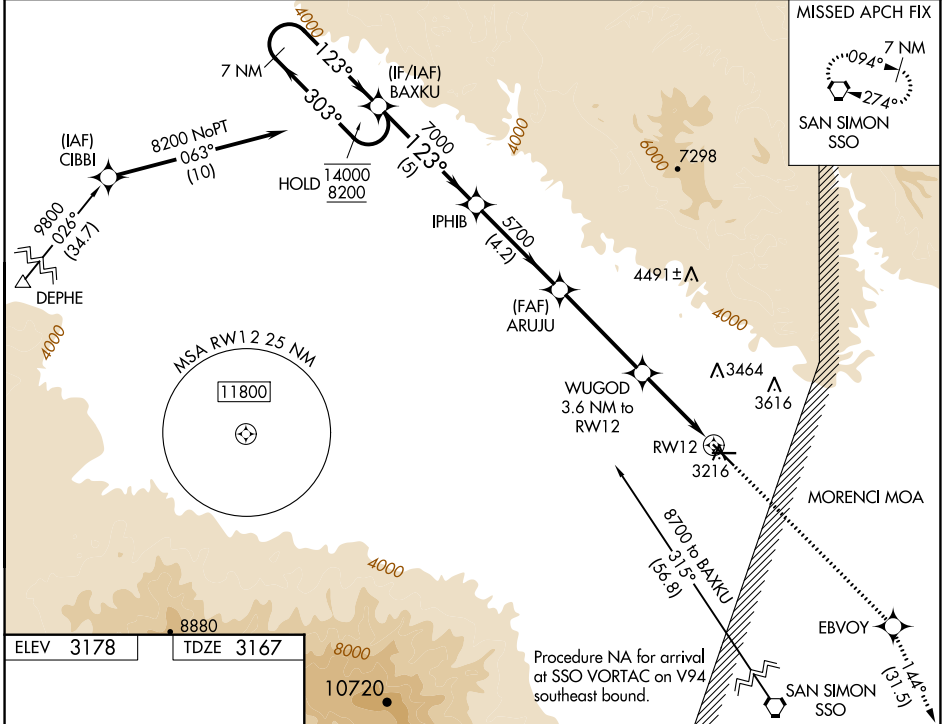


WAAS CH 69516 W12A	APP CRS 123°	Rwy Idg TDZE Apt Elev	6007 3167 3178
--	------------------------	-----------------------------	---

RNAV (GPS) RWY 12

SAFFORD RGNL/1LT DUANE SPALSBURY FLD (SAD)

RNP APCH - GPS.		ALBUQUERQUE CENTER 134.45 327.15		UNICOM 122.8 (CTAF) 0	
<p>⚠ Circling to Rwy 8 NA at night. Circling NA northeast of Rwy 12 and north of Rwy 26. For uncompensated Baro-VNAV systems, LNAV/VNAV NA below -6°C or above 54°C.</p>		<p>MISSED APPROACH: Climb to 10000 direct EBVOY and on track 144° to SSO VORTAC and hold.</p>			



7 NM Holding Pattern		BAXKU		IPHIB		ARUJU		10000 EBVOY		tr 144° SSO	
14000 ← 303°		8200 123° →		7000		5700		WUGOD 3.6 NM to RWY 12		1 NM to RWY 12	
GP 3.00°		TCH 40		5700		4360		RWY 12			
		← 5 NM		← 4.2 NM		← 4.2 NM		← 2.7 NM		← 1 NM	
CATEGORY		A		B		C		D			
LPV DA				3417-¾		250 (300-¾)					
LNAV/VNAV DA				3417-¾		250 (300-¾)					
LNAV MDA				3520-1		353 (400-1)					
CIRCLING		3580-1 402 (500-1)		3640-1 462 (500-1)		3640-1½ 462 (500-1½)		3900-2¼ 722 (800-2¼)			

SW-4, 28 NOV 2024 to 26 DEC 2024

SW-4, 28 NOV 2024 to 26 DEC 2024