

WAAS CH 78316 W30A	APP CRS 303°	Rwy Idg TDZE Apt Elev	6007 3169 3178
--	------------------------	-----------------------------	---

RNAV (GPS) RWY 30

SAFFORD RGNL/1LT DUANE SPALSBURY FLD (SAD)

RNP APCH - GPS.

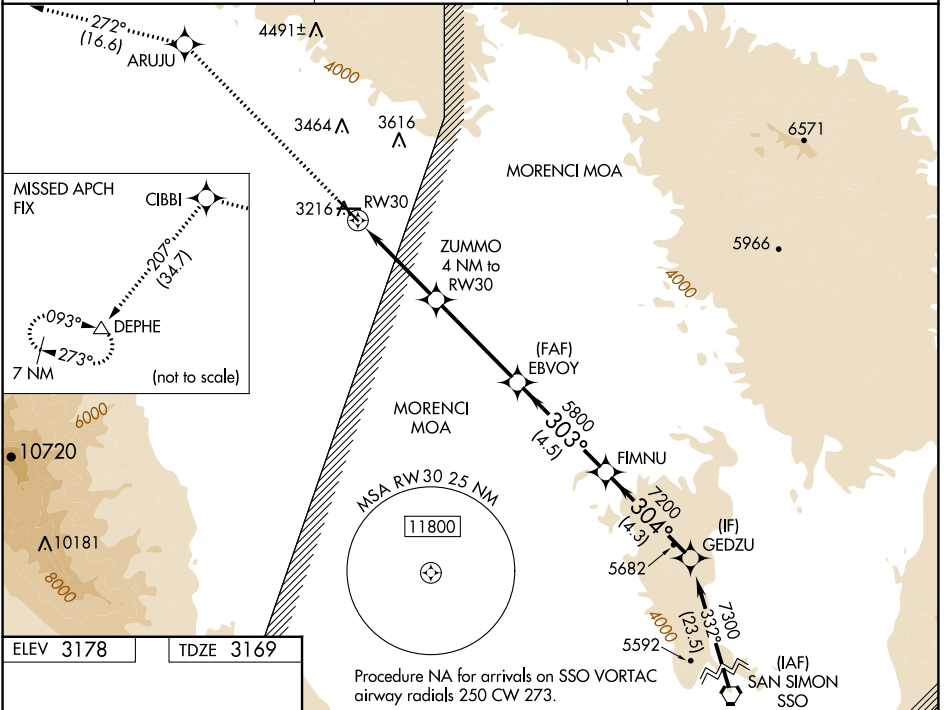
▽ Circling to Rwy 8 NA at night. Circling NA northeast of Rwy 12 and north of Rwy 26. For uncompensated Baro-VNAV systems, LNAV/VNAV NA below -6°C or above 54°C.

MISSED APPROACH: Climb to 10000 direct ARUUJ and on track 272° to CIBBI and on track 207° to DEPHE and hold.

ASOS
124.175

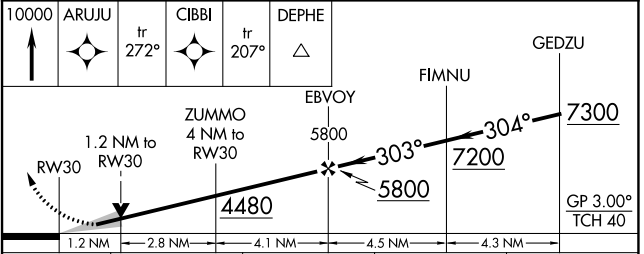
ALBUQUERQUE CENTER
134.45 327.15

UNICOM
122.8 (CTAF) 0

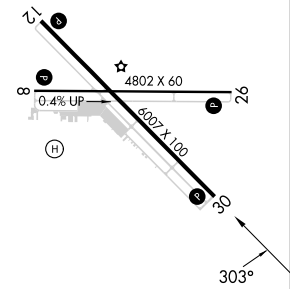


ELEV 3178 TDZE 3169

Procedure NA for arrivals on SSO VORTAC
airway radials 250 CW 273.



CATEGORY	A	B	C	D
LPV DA	3419-3/4 250 (300-3/4)			
LNAV/VNAV DA	3517-1 348 (400-1)			
LNAV MDA	3600-1	431 (500-1)	3600-1 1/4	431 (500-1 1/4)
CIRCLING	3600-1 422 (500-1)	3640-1 462 (500-1)	3640-1 1/2 462 (500-1 1/2)	3900-2 1/4 722 (800-2 1/4)



REIL Rws 8, 12, 26, and 30
MIRL Rws 8-26 and 12-30

SW-4, 28 NOV 2024 to 26 DEC 2024

SW-4, 28 NOV 2024 to 26 DEC 2024