

WAAS CH 40228 W16A	APP CRS 162°	Rwy Idg TDZE Apf Elev	7000 4202 4252
--	------------------------	-----------------------------	---

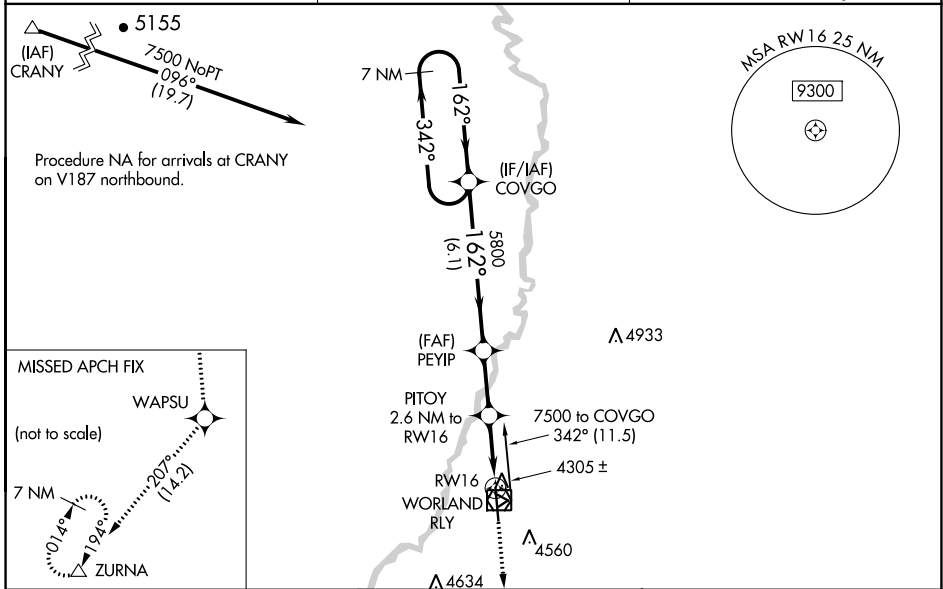
RNAV (GPS) RWY 16

WORLAND MUNI (W.R.L)

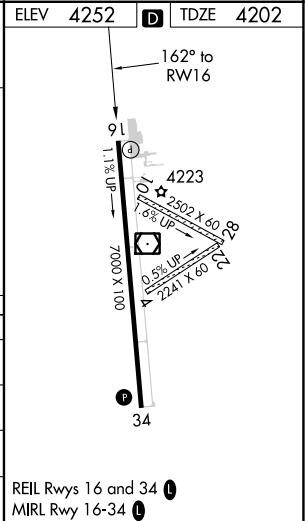
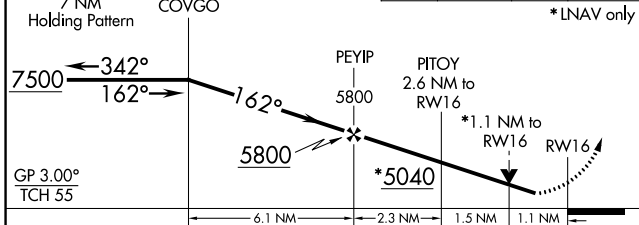
⚠ For uncompensated Baro-VNAV systems, LNAV/VNAV NA below -32°C (-25°F) or above 17°C (62°F). DME/DME RNP-0.3 NA. VDP and Baro-VNAV NA with Greybull altimeter setting. When local altimeter setting not received, use Greybull altimeter setting: increase LPV DA to 4574 feet, LNAV/VNAV DA to 4616 feet, and all MDA's 140 feet; increase LPV, LNAV/VNAV and LNAV all Cats, and Circling Cat C/D visibilities ½ SM. Helicopter visibility reduction below ¾ SM NA.

MISSED APPROACH: Climb to 9600 direct WAPSU and on track 207° to ZURNA and hold, continue climb-in-hold to 9600.

ASOS 135.475	SALT LAKE CENTER 133.25 285.6	UNICOM 123.05 (CTAF) 0
------------------------	---	----------------------------------



VGSI and RNAV glidepath not coincident (VGSI Angle 3.00/TCH 41).	9600 WAPSU	ZURNA	ELEV 4252	TDZE 4202
--	------------	-------	-----------	-----------



CATEGORY	A	B	C	D
LPV DA	4452-¾		250 (200-¾)	
LNAV/VNAV DA	4494-⅞		292 (300-⅞)	
LNAV MDA	4560-1 358 (400-1)		4560-1 ½ 358 (400-1 ½)	
CIRCLING	4920-1 668 (700-1)		4920-1 ¾ 668 (700-1 ¾) 5020-2 ½ 768 (800-2 ½)	

NW-1, 28 NOV 2024 to 26 DEC 2024

NW-1, 28 NOV 2024 to 26 DEC 2024