

PARIS, TEXAS

AL-803 (FAA)

23054

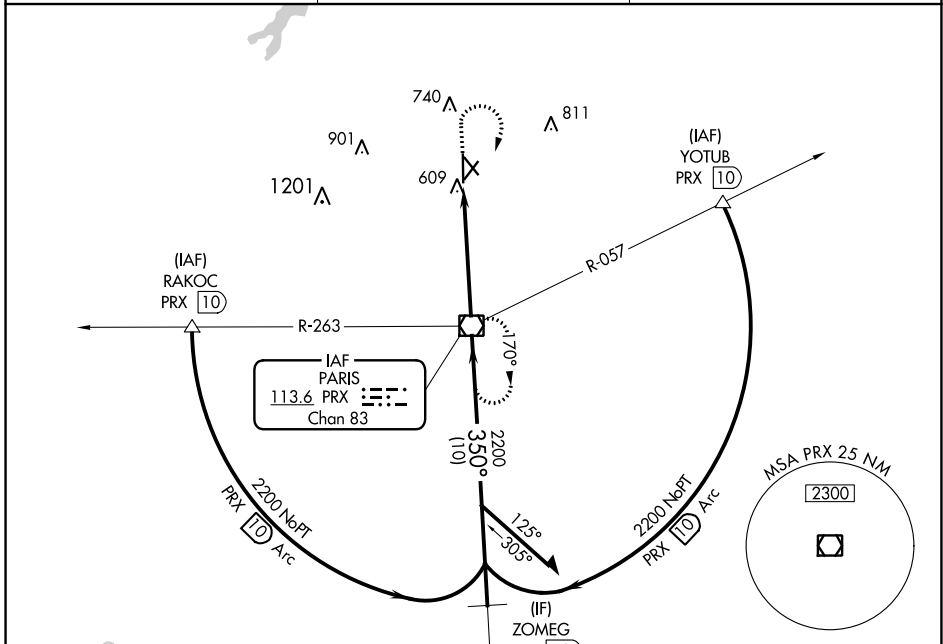
VOR/DME PRX 113.6 Chan 83	APP CRS 350°	Rwy Idg TDZE Apt Elev	6002 532 548
---	------------------------	-----------------------------	---

VOR RWY 35

COX FLD (PRX)

▼ Rwy 35 helicopter visibility reduction below 3/4 SM NA.
▲ MISSED APPROACH: Climb to 2000 then climbing right turn to 2300 direct PRX VOR/DME and hold.

AWOS-3PT 119.675	FORT WORTH CENTER 124.875	UNICOM 122.975 (CTAF) 0
----------------------------	-------------------------------------	--

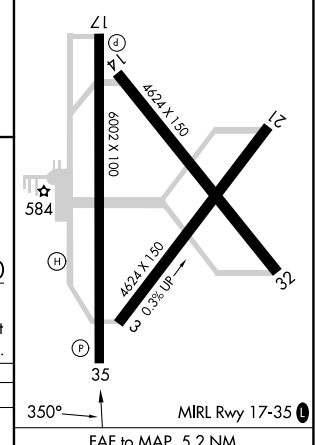
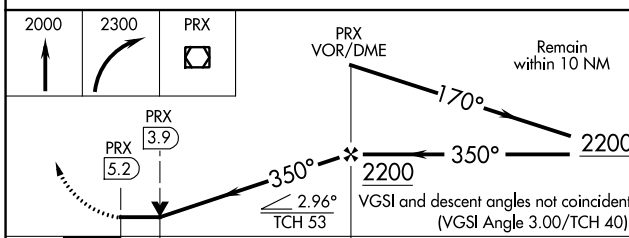


SC-2, 28 NOV 2024 to 26 DEC 2024

SC-2, 28 NOV 2024 to 26 DEC 2024



ELEV 548	D TDZE 532
----------	-------------------



CATEGORY	A	B	C	D
S-35	960-1	428 (500-1)	960-1 1/4	428 (500-1 1/4)
CIRCLING	1060-1	512 (600-1)	1100-1 1/2	1220-2 1/4
			552 (600-1 1/2)	672 (700-2 1/4)

Knots	60	90	120	150	180
Min:Sec	5:12	3:28	2:36	2:05	1:44

PARIS, TEXAS
 Amdt 2C 23FEB23

33°38'N-95°27'W

COX FLD (PRX) VOR RWY 35