

RNAV (GPS) RWY 28

CHIPPEWA COUNTY INTL (CIU)

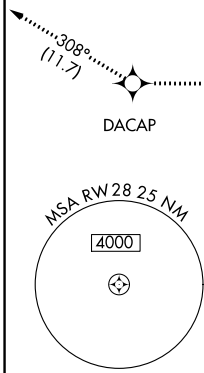
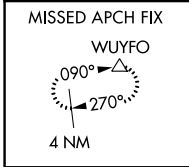
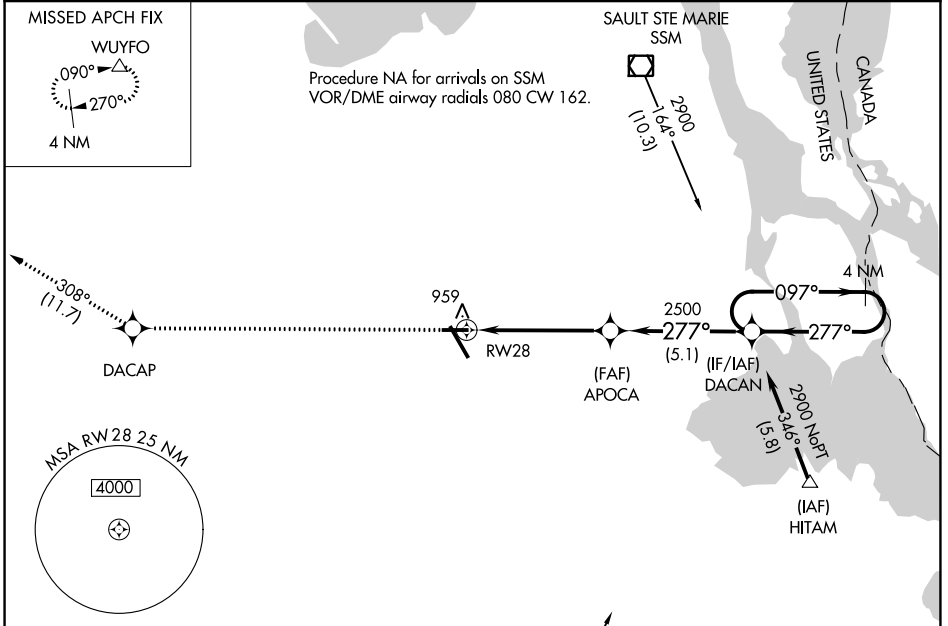
APP CRS 277°	Rwy Idg TDZE Apt Elev	5000 799 799
------------------------	-----------------------------	---

RNP APCH.

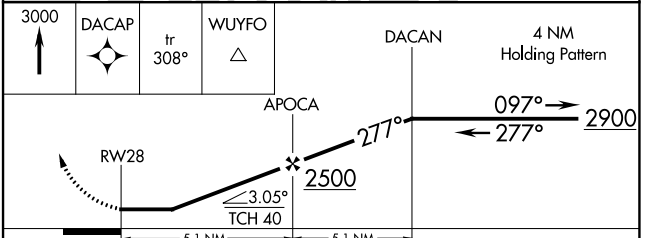
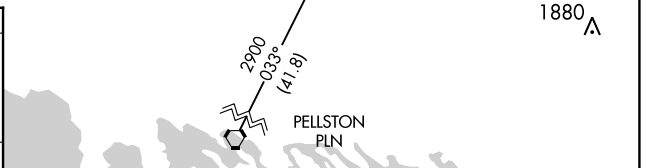
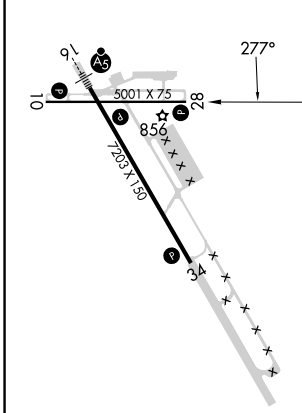
⚠ Rwy 28 helicopter visibility reduction below 1 SM NA. When local altimeter setting not received, use Sault Ste Marie Muni/Sanderson Fld altimeter setting; increase all MDA 60 feet, increase LNAV and Circling visibility Cat C/D ¼ SM. Straight-in and Circling Rwy 28 NA at night.

MISSED APPROACH: Climb to 3000 direct DACAP and track 308° to WUYFO and hold.

AWOS-3PT 127.575	TORONTO CENTER 132.65 344.5	UNICOM 123.0 (CTAF)
----------------------------	---------------------------------------	-------------------------------



ELEV 799	D	TDZE 799
----------	----------	----------



CATEGORY	A	B	C	D
LNAV MDA	1220-1	421 (500-1)	1220-1½	421 (500-1½)
C CIRCLING	1260-1	461 (500-1)	1260-1½ 461 (500-1½)	1360-2 561 (600-2)

REIL Rws 10, 28 and 34
MIRL Rwy 10-28
HIRL Rwy 16-34

EC-1, 28 NOV 2024 to 26 DEC 2024

EC-1, 28 NOV 2024 to 26 DEC 2024