

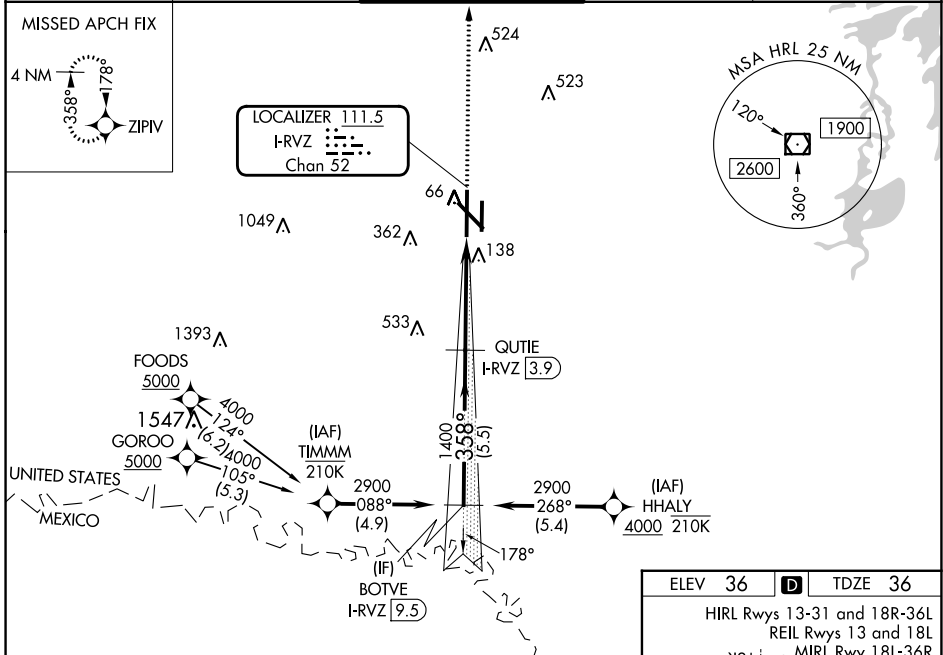
LOC/DME I-RVZ	APP CRS	Rwy Idg	9400
111.5	358°	TDZE	36
Chan 52		Apt Elev	36

ILS or LOC RWY 36L

VALLEY INTL (HRL)

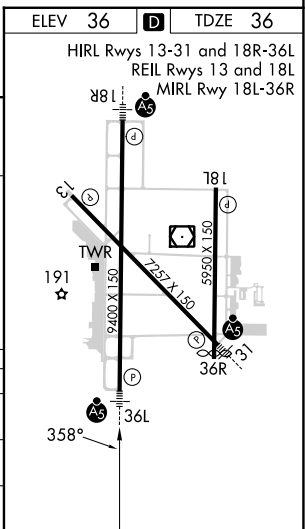
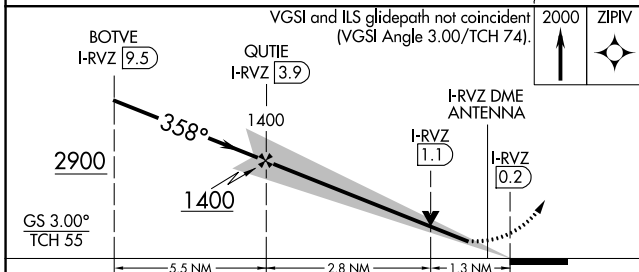
RNP APCH - GPS.		MALSR		MISSED APPROACH: Climb to 2000 direct ZIPIV and hold.
DME required.				
▼ VDP NA when using PIL altimeter setting. When local altimeter setting not received, use Port Label altimeter setting and increase S-ILS 36L DA to 278 feet; increase all MDAs 60 feet and S-LOC 36L Cats C and D visibilities to RVR 5500 and Circling visibility Cats C and D ½ SM. For inop ALS, increase S-LOC 36L Cat C/D visibility to 1 ½ SM. ▲ * RVR 1800 authorized with use of FD or AP or HUD to DA (NA when using PIL altimeter setting).				

ATIS 124.85	VALLEY APP CON 120.7 279.5	HARLINGEN TOWER * 119.3 (CTAF) 317.6	GND CON 121.7	UNICOM 122.95
-----------------------	--------------------------------------	--	-------------------------	-------------------------



SC-3, 28 NOV 2024 to 26 DEC 2024

SC-3, 28 NOV 2024 to 26 DEC 2024



CATEGORY	A	B	C	D
S-ILS 36L *	236/24 200 (200-½)			
S-LOC 36L	500/24	464 (500-½)	500/50	464 (500-1)
CIRCLING	500-1 464 (500-1)	560-1 524 (600-1)	600-1¾ 564 (600-1¾)	680-2 644 (700-2)