

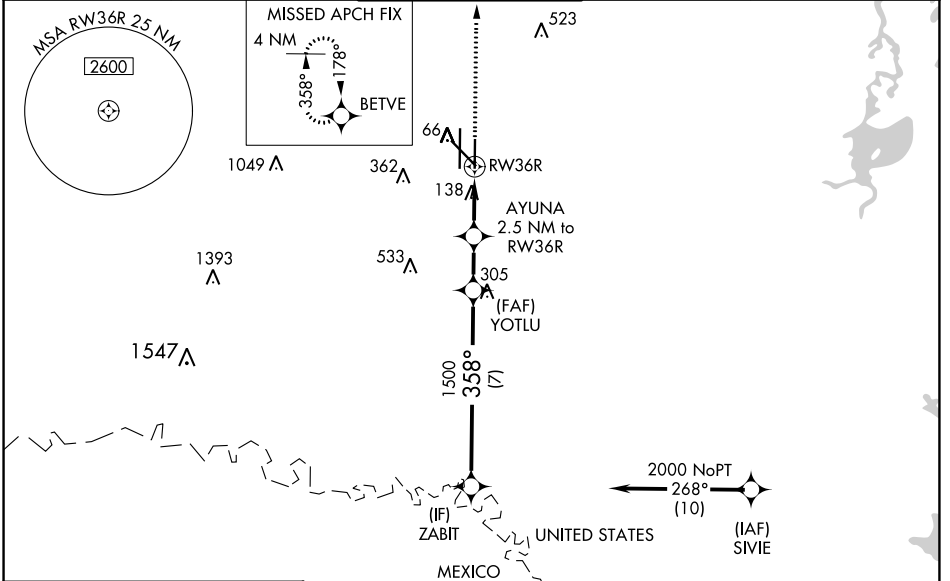
WAAS CH 72830 W36A	APP CRS 358°	Rwy Idg TDZE Apt Elev	5759 36 36
--	------------------------	-----------------------------	---------------------------------------

RNAV (GPS) RWY 36R

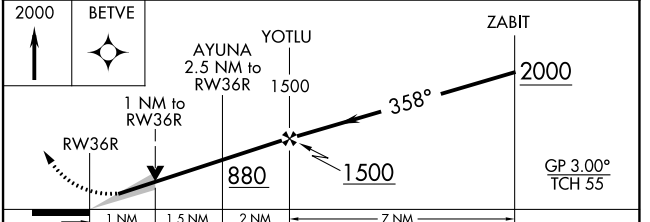
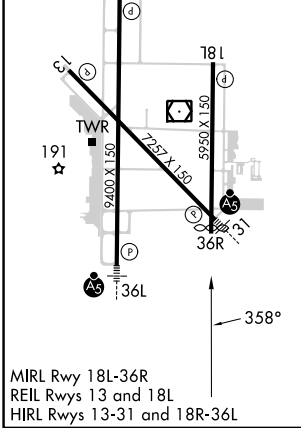
VALLEY INTL (HRL)

RNP APCH - GPS.		<p>⚠ For uncompensated Baro-VNAV systems, LNAV/VNAV NA below -1°C or above 54°C. Baro-VNAV and VDP NA when using Port Isabel altimeter setting. When local altimeter setting not received, use Port Isabel altimeter setting: increase LPV DA to 278 feet; increase LNAV/VNAV DA to 328 feet and all visibilities ½ SM, increase all MDAs 60 feet and LNAV visibility Cat C and D ½ SM, and Circling visibility Cats C and D ¼ SM.</p>	<p>MISSED APPROACH: Climb to 2000 direct BETVE and hold.</p>

ATIS 124.85	VALLEY APP CON 120.7 279.5	HARLINGEN TOWER ★ 119.3 (CTAF) 317.6	GND CON 121.7	UNICOM 122.95
-----------------------	--------------------------------------	--	-------------------------	-------------------------



ELEV 36	D	TDZE 36
---------	----------	---------



CATEGORY	A	B	C	D
LPV DA		236-¾	200 (200-¾)	
LNAV/VNAV DA		286-¾	250 (300-¾)	
LNAV MDA		400-1	364 (400-1)	
C CIRCLING	460-1 424 (500-1)	560-1 524 (600-1)	600-1½ 564 (600-1½)	680-2 644 (700-2)

SC-3, 28 NOV 2024 to 26 DEC 2024

SC-3, 28 NOV 2024 to 26 DEC 2024