

APP CRS	Rwy Idg	7257
133°	TDZE	35
	Apt Elev	36

RNAV (RNP) Z RWY 13

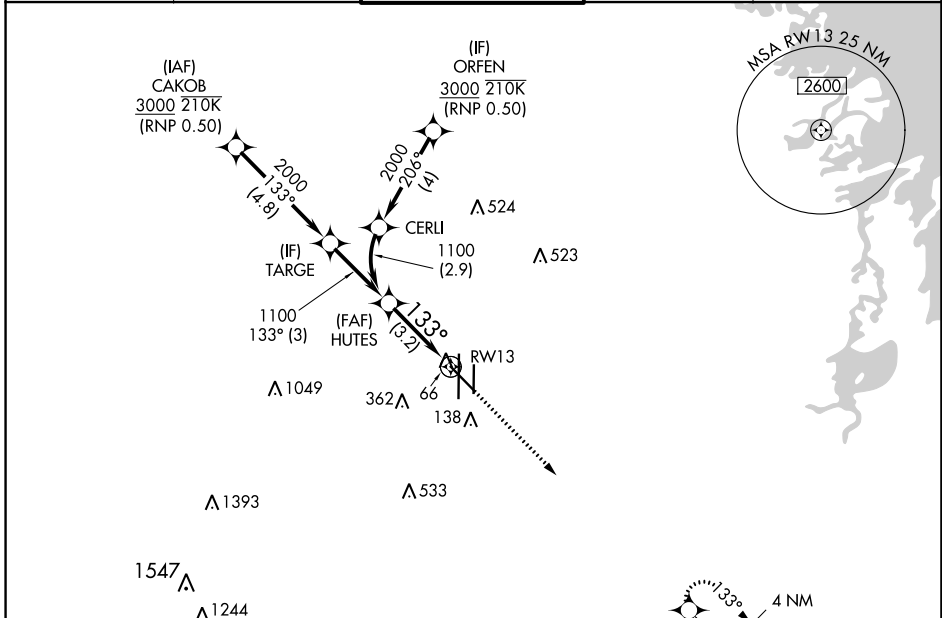
VALLEY INTL (HRL)

RNP AR APCH - GPS.

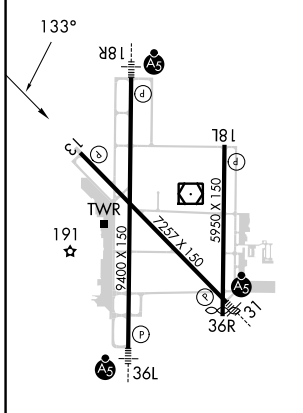
⚠ For uncompensated Baro-VNAV systems, procedure NA below -1°C or above 54°C. When local altimeter setting not received, procedure NA.

MISSED APPROACH: Climb to 2000 direct AMAPE and hold.

ATIS 124.85	VALLEY APP CON 120.7 279.5	HARLINGEN TOWER ★ 119.3 (CTAF) 0 317.6	GND CON 121.7	UNICOM 122.95
-----------------------	--------------------------------------	--	-------------------------	-------------------------



ELEV	36	D	TDZE	35
------	----	----------	------	----



MIRL Rwy 18L-36R
REIL Rwys 13 and 18L
HIRL Rwys 13-31 and 18R-36L



HUTES	See planview for multiple IF locations.	2000	AMAPE
1100		↑	⬠
1100			
GP 3.00°			
TCH 59			
	3.2 NM		

CATEGORY	A	B	C	D
RNP 0.15 DA		285- ³ / ₄	250 (300- ³ / ₄)	
RNP 0.30 DA		342- ⁷ / ₈	307 (400- ⁷ / ₈)	

AUTHORIZATION REQUIRED

SC-3, 28 NOV 2024 to 26 DEC 2024

SC-3, 28 NOV 2024 to 26 DEC 2024