

# RNAV (RNP) Z RWY 36L

VALLEY INTL (H.R.L.)

APP CRS	Rwy Idg	<b>9400</b>
<b>358°</b>	TDZE	<b>36</b>
	Apt Elev	<b>36</b>

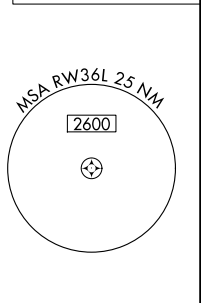
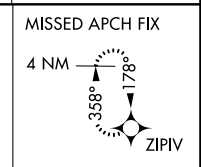
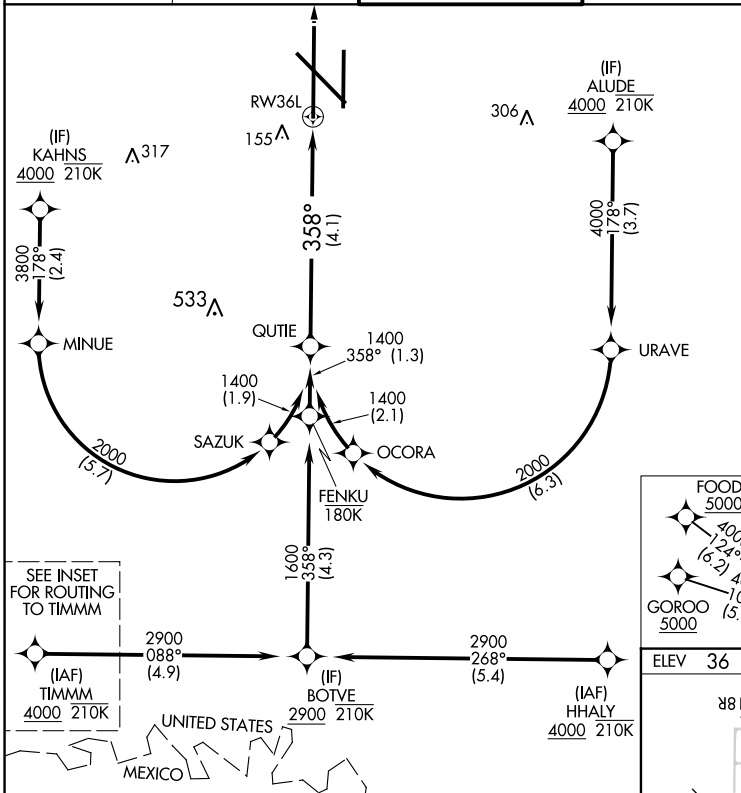
RNP AR APCH - GPS.

For uncompensated Baro-VNAV systems, procedure NA below -1°C or above 54°C. When local altimeter setting not received, procedure NA. For inop ALS, increase RNP 0.11 DA all Cats visibility to 7/8 SM.

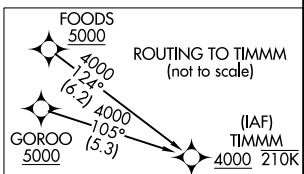


MISSED APPROACH: Climb to 2000 direct ZIPIV and hold.

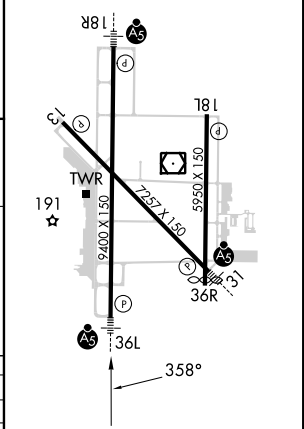
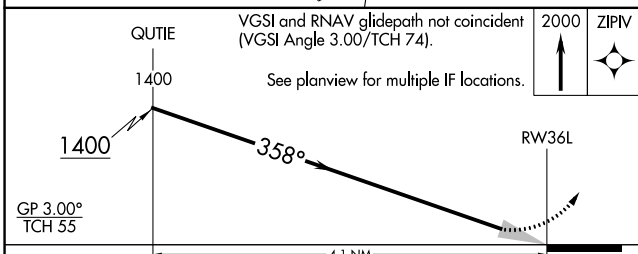
ATIS <b>124.85</b>	VALLEY APP CON <b>120.7 279.5</b>	HARLINGEN TOWER★ <b>119.3(CTAF) 0 317.6</b>	GND CON <b>121.7</b>	UNICOM <b>122.95</b>
-----------------------	--------------------------------------	--	-------------------------	-------------------------



SEE INSET FOR ROUTING TO TIMMM



ELEV 36	TDZE 36
---------	---------



CATEGORY	A	B	C	D
RNP 0.11 DA		334-1/2	298 (300-1/2)	
RNP 0.30 DA		484-7/8	448 (500-7/8)	

## AUTHORIZATION REQUIRED

MIRL Rwy 18L-36R  
REIL Rwys 13 and 18L  
HIRL Rwys 13-31 and 18R-36L

SC-3, 28 NOV 2024 to 26 DEC 2024

SC-3, 28 NOV 2024 to 26 DEC 2024