

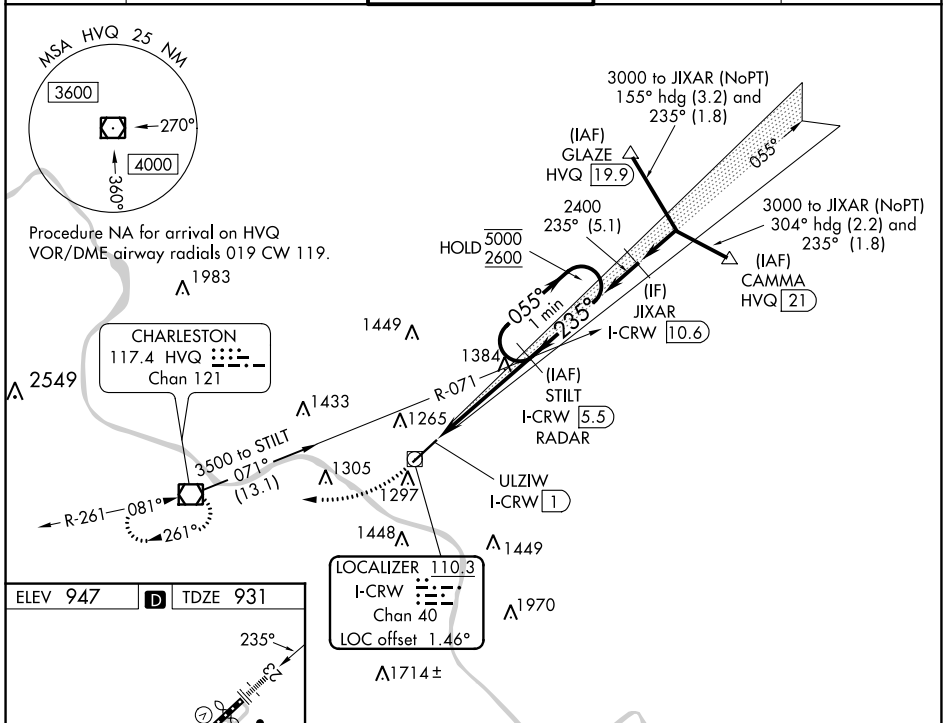
| | | |
|---|------------------------|--|
| LOC/DME I-CRW 110.3 Chan 40 | APP CRS 235° | Rwy ldg 6215 TDZE 931 Apt Elev 947 |
|---|------------------------|--|

ILS or LOC RWY 23

WEST VIRGINIA INTL YEAGER (CRW)

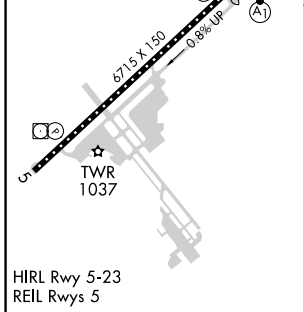
| | | | |
|---|--|------------|---|
| DME or RADAR required. | | ALSF-1 | MISSED APPROACH: Climb to 1800 then climbing right turn to 3000 direct HVQ VOR/DME and hold. |
| Autopilot coupled approach NA below 1700. Rwy 23 helicopter visibility reduction below RVR 4000 NA. Inop table does not apply to S-ILS 23. For inop ALS, increase S-LOC 23 Cat A/B visibility to RVR 5500, and Cat C/D to 2 SM. | | | |

| | | | | |
|----------------------|--|--|-------------------------------|---------------------------|
| ATIS 127.6 | CHARLESTON APP CON 124.1 269.125 | CHARLESTON TOWER 125.7 257.8 | GND CON 121.8 348.6 | CLNC DEL 118.55 |
|----------------------|--|--|-------------------------------|---------------------------|



NE-4, 28 NOV 2024 to 26 DEC 2024

NE-4, 28 NOV 2024 to 26 DEC 2024



| | | | | | |
|-------------------|------|------|------|------|------|
| FAF to MAP 4.5 NM | | | | | |
| Knots | 60 | 90 | 120 | 150 | 180 |
| Min:Sec | 4:30 | 3:00 | 2:15 | 1:48 | 1:30 |