

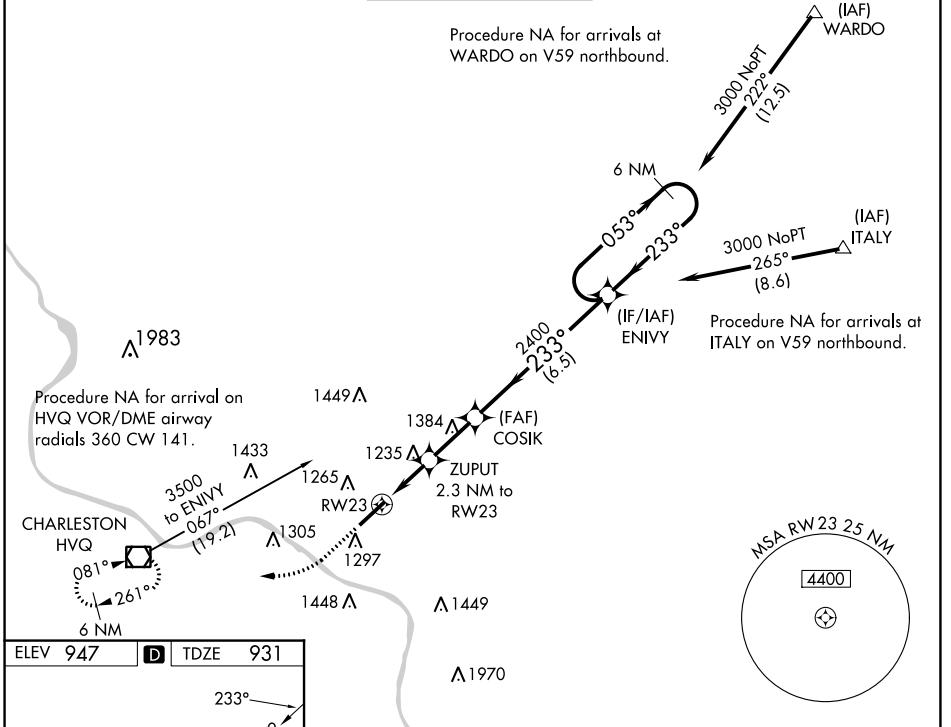
WAAS CH 45616 W23A	APP CRS 233°	Rwy Idg TDZE Apt Elev	6215 931 947
---------------------------------	------------------------	-----------------------------	---

RNAV (GPS) Y RWY 23

WEST VIRGINIA INTL YEAGER (CRW)

<p>▼ For uncompensated Baro-VNAV systems, LNAV/VNAV NA below -15°C (4°F) or above 54°C (130°F). DME/DME RNP-0.3 NA. ▲ For inoperative ALSF, increase LNAV/VNAV all Cats visibility to 2 1/4. **RVR 1800 authorized with use of FD or AP or HUD to DA.</p>	<p>ALSF-1 </p>	<p>MISSED APPROACH: Climb to 1400 then climbing right turn to 3000 direct HVQ VOR/DME and hold.</p>
---	---------------------	---

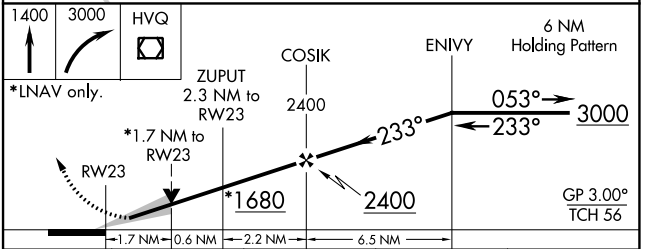
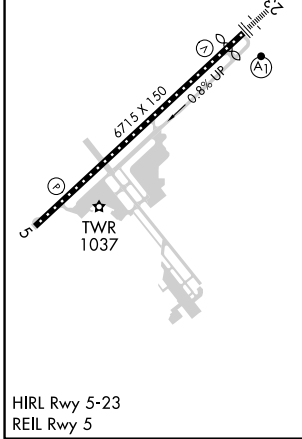
ATIS 127.6	CHARLESTON APP CON 124.1 269.125	CHARLESTON TOWER 125.7 257.8	GND CON 121.8 348.6	CLNC DEL 118.55
----------------------	--	--	-------------------------------	---------------------------



NE-4, 28 NOV 2024 to 26 DEC 2024

NE-4, 28 NOV 2024 to 26 DEC 2024

ELEV 947	D	TDZE 931
----------	----------	----------



CATEGORY	A	B	C	D
LPV DA**		1131/24	200 (200-1/2)	
LNAV/VNAV DA		1601-1 1/8	670 (700-1 1/8)	
LNAV MDA	1500/24	569 (600-1/2)	1500-1 3/8	569 (600-1 3/8)
C CIRCLING	1600-1	653 (700-1)	1760-2 1/2 813 (900-2 1/2)	1760-2 3/4 813 (900-2 3/4)