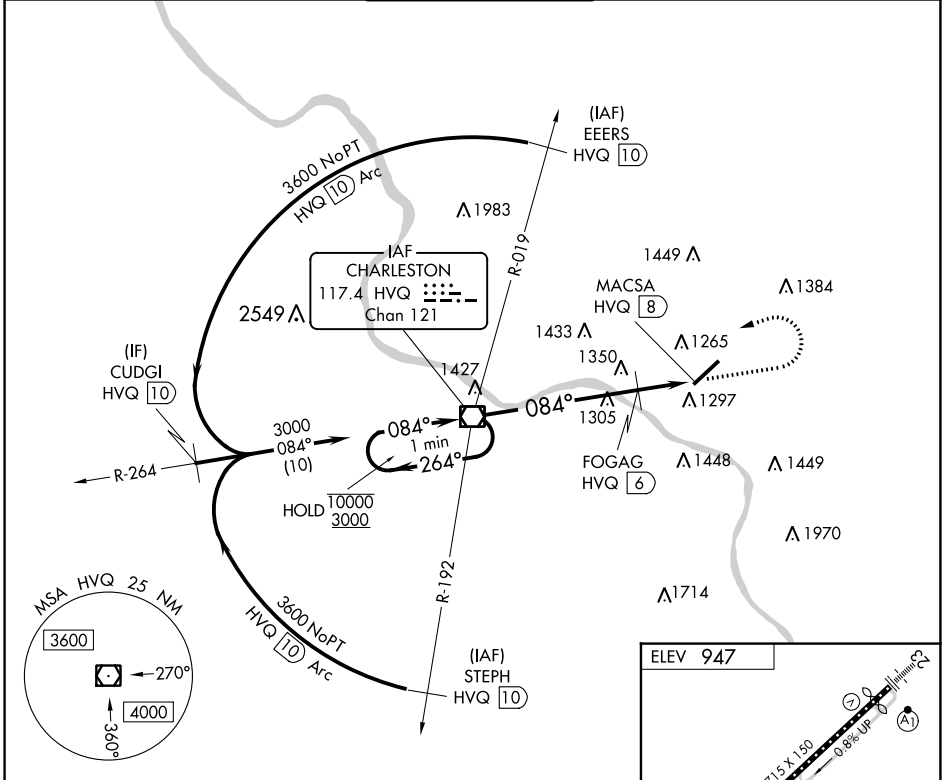


VOR/DME HVQ 117.4 Chan 121	APP CRS 084°	Rwy Idg TDZE Apt Elev 947	N/A N/A 947
--	------------------------	---	-------------------

VOR-A
WEST VIRGINIA INTL YEAGER (CRW)

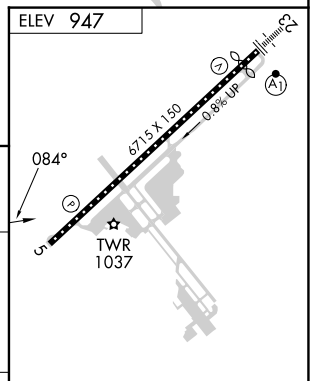
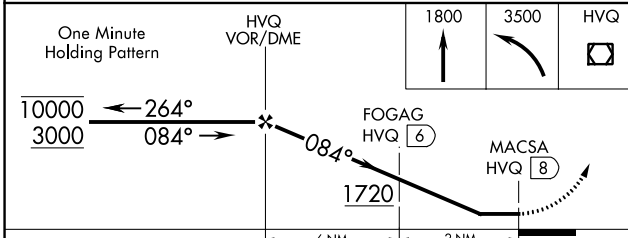
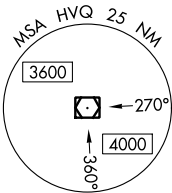
MISSED APPROACH: Climb to 1800 then climbing left turn to 3500 direct HVQ VOR/DME and hold.

ATIS 127.6	CHARLESTON APP CON 124.1 269.125	CHARLESTON TOWER 125.7 257.8	GND CON 121.8 348.6	CLNC DEL 118.55
----------------------	--	--	-------------------------------	---------------------------



NE-4, 28 NOV 2024 to 26 DEC 2024

NE-4, 28 NOV 2024 to 26 DEC 2024



CATEGORY	A	B	C	D
C CIRCLING	1720-1 773 (800-1)		1760-2½ 813 (900-2½)	1880-3 933 (1000-3)
FOGAG FIX MINIMUMS (DME REQUIRED)				
C CIRCLING	1600-1 653 (700-1)		1760-2½ 813 (900-2½)	1880-3 933 (1000-3)

HIRL Rwy 5-23 REIL Rwy 5					
FAF to MAP 8 NM					
Knots	60	90	120	150	180
Min:Sec	8:00	5:20	4:00	3:12	2:40