

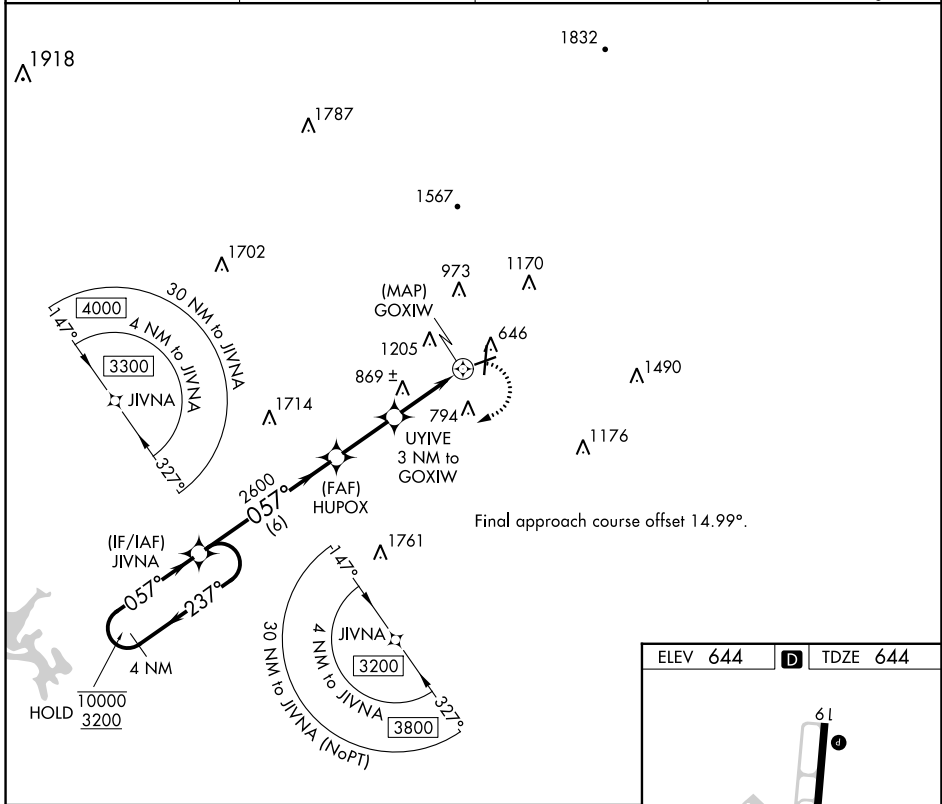
APP CRS	Rwy Idg	4380
057°	TDZE	644
	Apt Elev	644

RNAV (GPS) RWY 7

RICHARD B RUSSELL RGNL - J H TOWERS FLD (RMG)

RNP APCH - GPS.	<p>▼ Rwy 7 helicopter visibility reduction below 3/4 SM NA. ▲ Straight-in minimums NA at night. Circling NA northwest of Rwys 7 and 19.</p>	MISSED APPROACH: Climbing right turn to 3200 direct JIVNA and hold.
-----------------	---	---

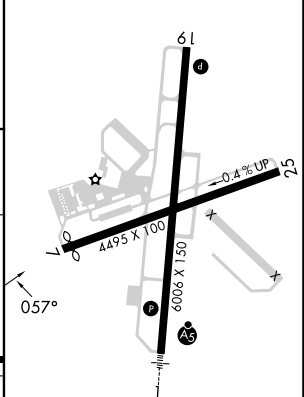
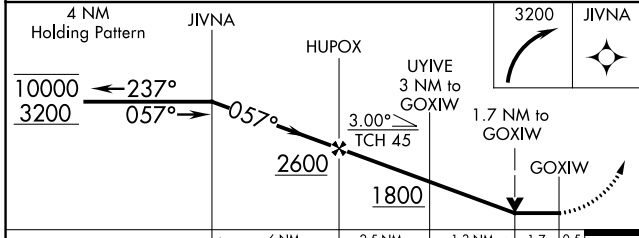
ASOS 119.925	ATLANTA CENTER 124.5 270.325	GCO 121.725	UNICOM 122.725 (CTAF)
------------------------	--	-----------------------	---------------------------------



SE-4, 28 NOV 2024 to 26 DEC 2024

SE-4, 28 NOV 2024 to 26 DEC 2024

ELEV 644	TDZE 644
----------	----------



CATEGORY	A	B	C	D
LNNAV MDA	1380-1	736 (800-1)	1380-2	736 (800-2)
CIRCLING	1380-1	736 (800-1)	1480-2 1/2 836 (900-2 1/2)	1840-3 1196 (1200-3)

HIRL Rwy 1-19

RNAV (GPS) RWY 7