

WAAS CH 99704 W35A	APP CRS 347°	Rwy Idg TDZE Apt Elev	5000 1864 1864
--	------------------------	-----------------------------	---

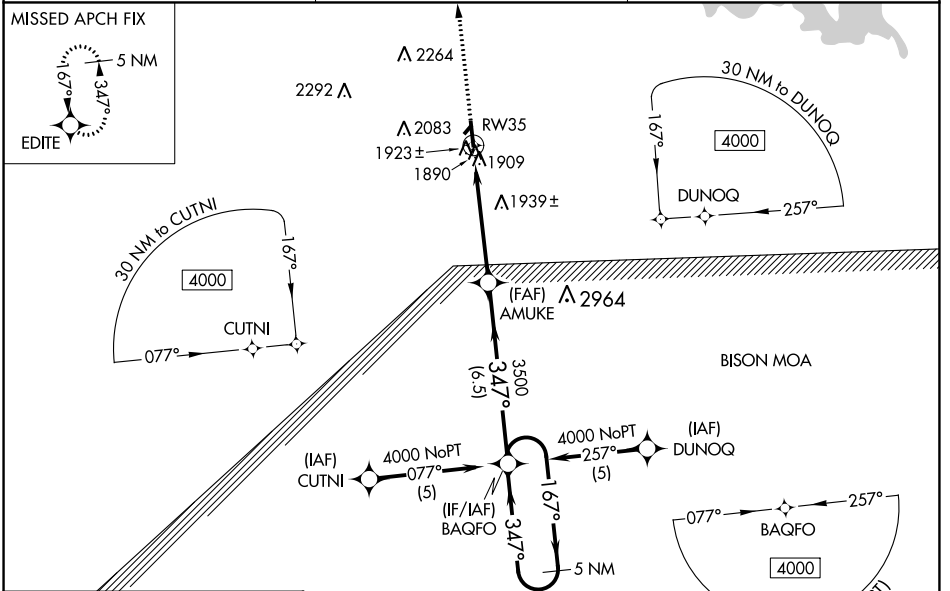
RNAV (GPS) RWY 35

RUSSELL MUNI (RSL)

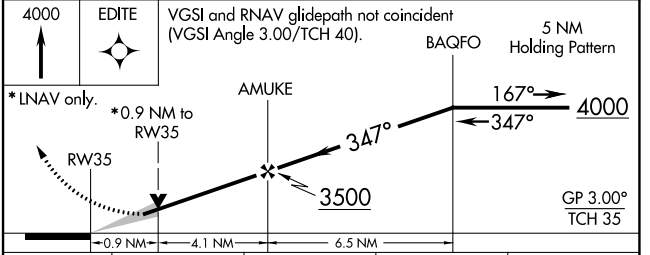
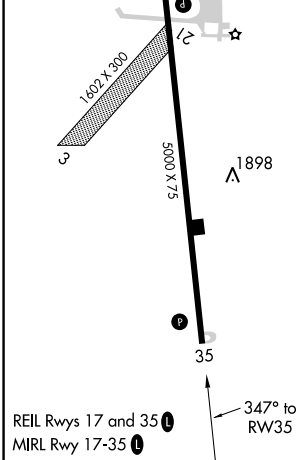
⚠ Baro-VNAV NA when using Hays altimeter setting. For uncompensated Baro-VNAV systems, LNAV/VNAV NA below -18°C (0°F) or above 54°C (130°F). DME/DME RNP-0.3 NA.
⚠ VDP NA when using Hays altimeter setting. When local altimeter setting not received, use Hays altimeter setting: increase LPV all Cats DA to 2187 feet, LNAV/VNAV all Cats DA to 2267 feet and all visibilities ¼ SM; increase all MDA 80 feet, LNAV Cat C visibility ⅓ SM and Circling Cat C visibility ¼ SM. Circling NA to Rwys 3 and 21.

MISSED APPROACH:
Climb to 4000 direct EDITE and hold.

ASOS 128.325	KANSAS CITY CENTER 124.4 322.4	UNICOM 122.7 (CTAF) 0
------------------------	--	---------------------------------



ELEV 1864	TDZE 1864
-----------	-----------



CATEGORY	A	B	C	D
LPV DA		2118-1 254 (300-1)		NA
LNAV/VNAV DA		2198-1½ 334 (400-1½)		NA
LNAV MDA		2200-1 336 (400-1)		NA
CIRCLING	2240-1 376 (400-1)	2320-1 456 (500-1)	2620-2¼ 756 (800-2¼)	NA

NC-2, 28 NOV 2024 to 26 DEC 2024

NC-2, 28 NOV 2024 to 26 DEC 2024