

| | | | |
|--|------------------------|---|-------------|
| WAAS CH 90540 W23A | APP CRS 231° | Rwy Idg TDZE 754 Apt Elev 782 | 6002 |
|--|------------------------|---|-------------|

RNAV (GPS) RWY 23

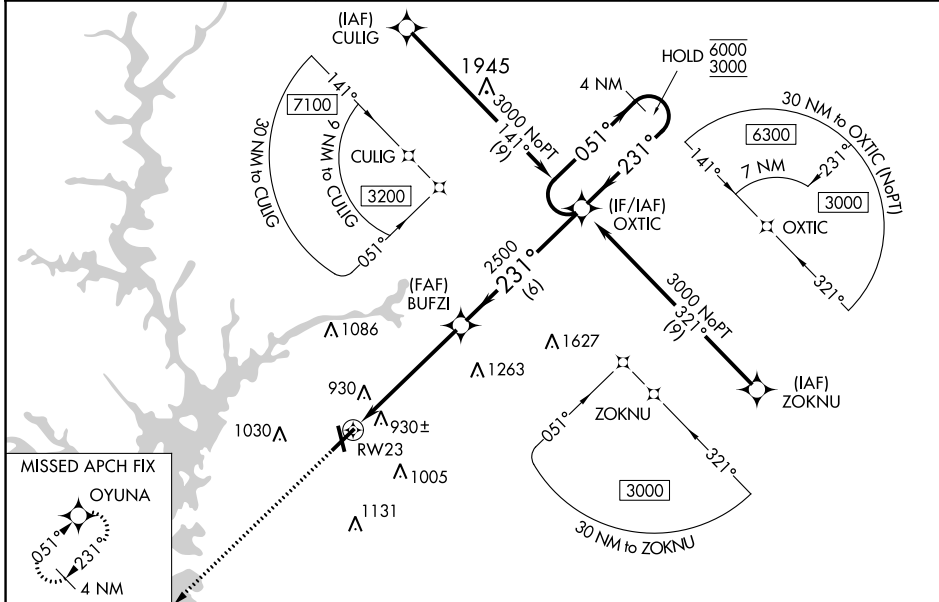
ANDERSON RGNL (A.ND)

RNP APCH - GPS.

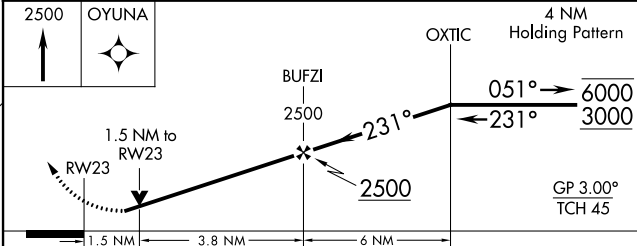
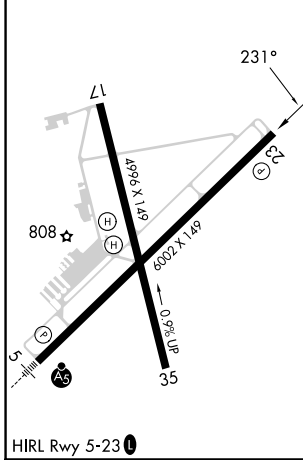
⚠ Circling Rwy 17, 35 NA at night. Baro-VNAV and VDP NA when using Clemson altimeter setting. Rwy 23 helicopter visibility reduction below 3/4 SM NA. For uncompensated Baro-VNAV systems, LNAV/VNAV NA below -7°C or above 54°C. When local altimeter setting not received, use Clemson altimeter setting and increase LPV DA to 1149 feet and all visibilities 1/8 SM; increase LNAV/VNAV DA to 1267 feet; increase all MDAs 60 feet and visibility LNAV Cats C/D and Circling Cats C/D 1/4 SM.

MISSED APPROACH: Climb to 2500 direct OYUNA and hold.

| | | |
|------------------------|---|----------------------|
| ASOS 120.675 | GREER APP CON ★ 118.8 270.275 | CTAF 123.6 |
|------------------------|---|----------------------|



| | |
|-----------------|-----------------|
| ELEV 782 | TDZE 754 |
|-----------------|-----------------|



| CATEGORY | A | B | C | D |
|-------------------|-----------------------|-----------------------|-------------------------------|-------------------------------|
| LPV DA | | 1102-1 | 348 (400-1) | |
| LNAV/VNAV DA | | 1220-1 3/8 | 466 (500-1 3/8) | |
| LNAV MDA | 1280-1 | 526 (500-1) | 1280-1 1/2 | 526 (500-1 1/2) |
| C CIRCLING | 1280-1 498 (500-1) | 1320-1 538 (600-1) | 1440-1 3/4 658 (700-1 3/4) | 1500-2 1/4 718 (800-2 1/4) |

SE-2, 28 NOV 2024 to 26 DEC 2024

SE-2, 28 NOV 2024 to 26 DEC 2024