

WAAS CH <b>93710</b> <b>W18A</b>	APP CRS <b>184°</b>	Rwy Idg TDZE Apt Elev	<b>5200</b> <b>573</b> <b>603</b>
--	------------------------	-----------------------------	---

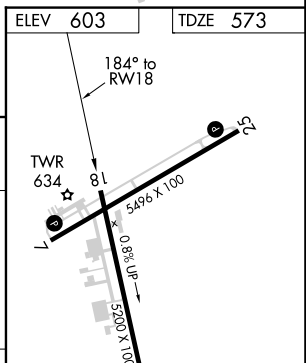
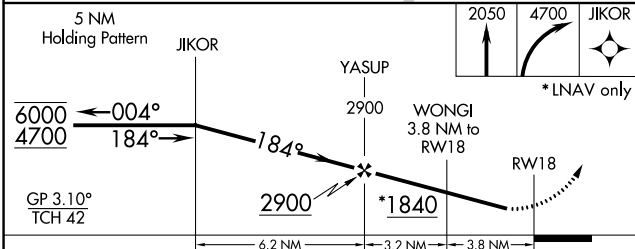
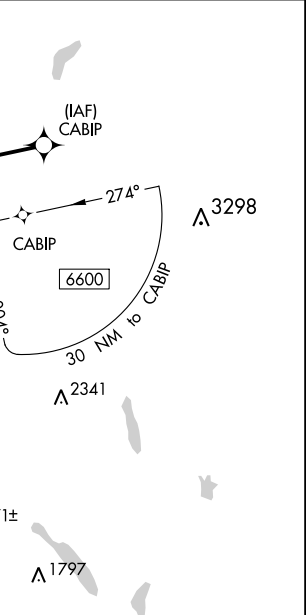
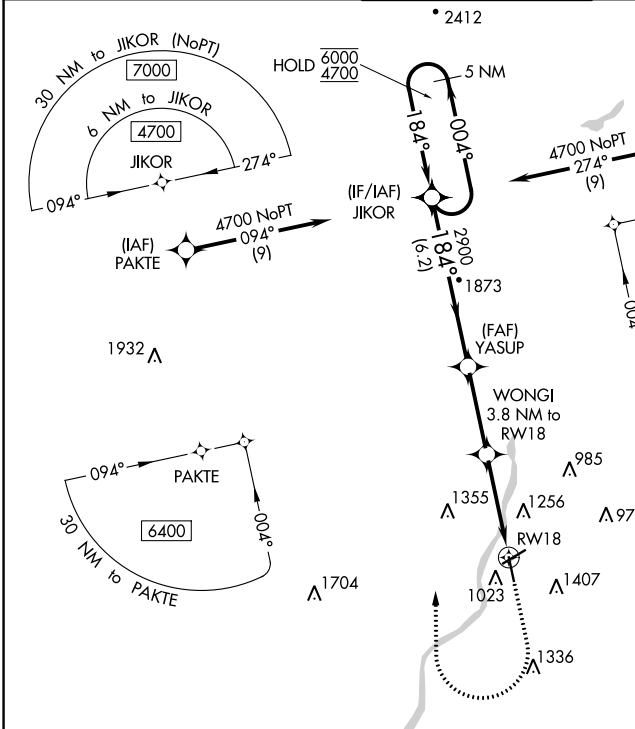
# RNAV (GPS) RWY 18

LEBANON MUNI (L.E.B)

RNP APCH.  
 Rwy 18 helicopter visibility reduction below 3/4 SM NA.  
 -20°C

MISSED APPROACH: Climb to 2050 then climbing right turn to 4700 direct JIKOR and hold, continue climb in hold to 4700.

ATIS <b>118.65</b>	BOSTON CENTER <b>134.7 269.475</b>	LEBANON TOWER ★ <b>125.95 (CTAF) 0 235.775</b>	GND CON <b>121.6</b>	UNICOM <b>122.95</b>
-----------------------	---------------------------------------	---	-------------------------	-------------------------



CATEGORY	A	B	C	D
LPV DA	933-1 360 (400-1)			
RNAV MDA	1700-1¼ 1127 (1100-1¼)	1700-1½ 1127 (1100-1½)	1700-3	1127 (1100-3)
CIRCLING	1700-1¼ 1097 (1100-1¼)	1720-1½ 1117 (1200-1½)	1820-3 1217 (1300-3)	2020-3 1417 (1500-3)

MIRL Rwy 7-25 **1**  
 HIRL Rwy 18-36 **1**  
 REIL Rwys 7 and 25 **1**  
 REIL Rwy 18

NE-1, 28 NOV 2024 to 26 DEC 2024

NE-1, 28 NOV 2024 to 26 DEC 2024