

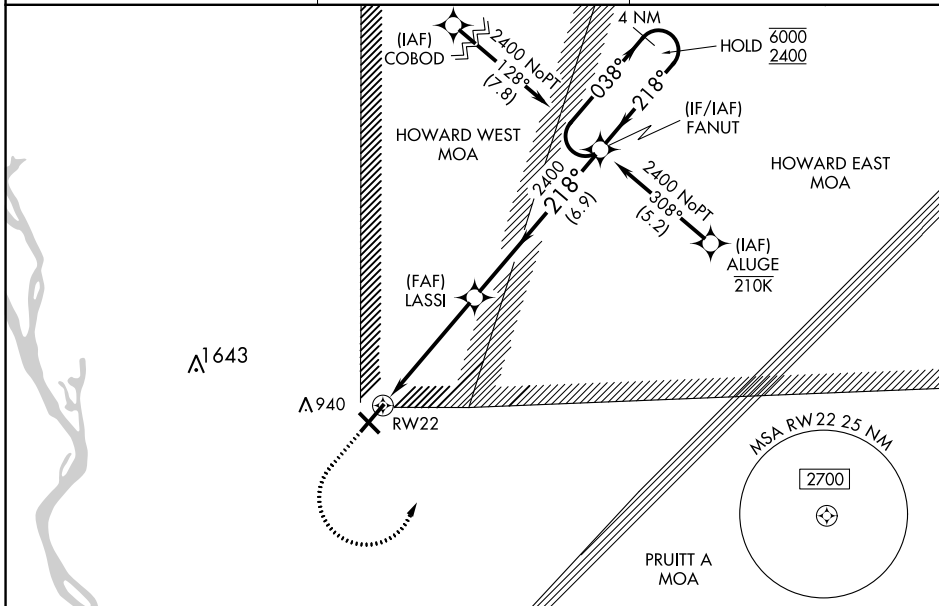
WAAS CH 45705 W22A	APP CRS 218°	Rwy Idg TDZE Apt Elev	7098 747 769
--	------------------------	-----------------------------	---

RNAV (GPS) RWY 22

QUINCY RGNL-BALDWIN FLD (UIN)

RNP APCH - GPS.		MISSED APPROACH: Climb to 1200 then climbing left turn to 2400 direct FANUT and hold.
<p>For uncompensated Baro-VNAV systems, LNAV/VNAV NA below -21°C or above 54°C.</p>		

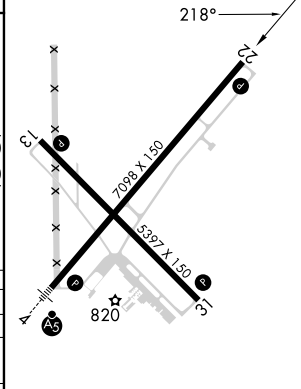
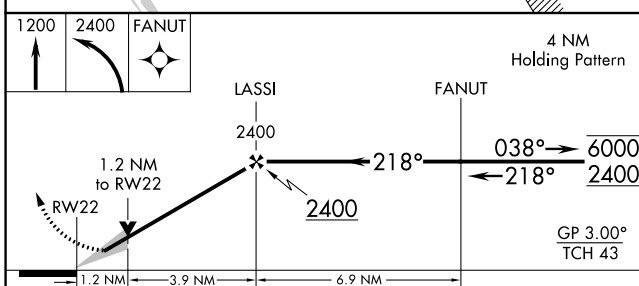
ASOS 121.425	KANSAS CITY CENTER 126.225 317.775	UNICOM 123.0 (CTAF)
------------------------	--	-------------------------------



EC-3, 28 NOV 2024 to 26 DEC 2024

EC-3, 28 NOV 2024 to 26 DEC 2024

ELEV 769	D	TDZE 747
----------	----------	----------



CATEGORY	A	B	C	D
LPV DA		997-3/4	250 (300-3/4)	
LNAV/VNAV DA		1050-7/8	303 (300-7/8)	
LNAV MDA	1180-1	433 (500-1)	1180-1 1/4	433 (500-1 1/4)
C CIRCLING	1180-1 411 (500-1)	1220-1 451 (500-1)	1240-1 1/2 471 (500-1 1/2)	1320-2 551 (600-2)

HIRL Rwy 4-22 **D**
MIRL Rwy 13-31 **D**
REIL Rwy 22 **D**