

WAAS CH <b>82303</b> W13A	APP CRS <b>124°</b>	Rwy ldg TDZE Apt Elev	<b>6600</b> <b>4313</b> <b>4313</b>
---------------------------------	------------------------	-----------------------------	---

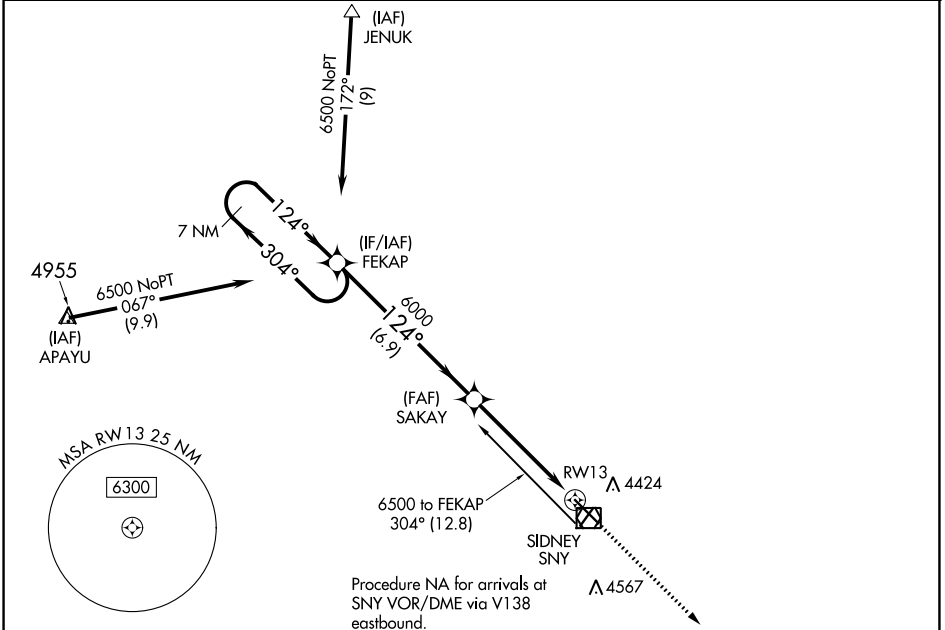
# RNAV (GPS) RWY 13

SIDNEY MUNI/LLOYD W CARR FLD (SNY)

**⚠** DME/DME RNP-0.3 NA. VDP NA when using Kimball altimeter setting. When local altimeter setting not received, use Kimball altimeter setting: increase DA to 4723 feet and visibility  $\frac{3}{4}$  SM; increase all MDAs 160 feet and visibility Cats C and D  $\frac{1}{2}$  SM.

MISSED APPROACH: Climb to 6000 direct GIGDE and hold.

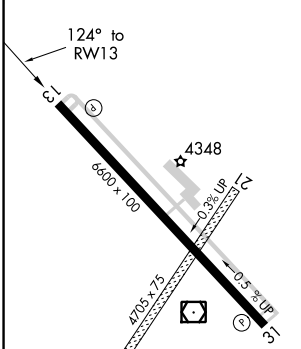
ASOS <b>125.775</b>	DENVER CENTER <b>118.475 225.4</b>	UNICOM <b>122.8 (CTAF) 0</b>
------------------------	---------------------------------------	---------------------------------



NC-2, 28 NOV 2024 to 26 DEC 2024

NC-2, 28 NOV 2024 to 26 DEC 2024

ELEV 4313	TDZE 4313
-----------	-----------



REL Rwy 13 and 31 **0**  
HIRL Rwy 13-31 **0**

7 NM Holding Pattern	FEKAP		SAKAY		6000	GIGDE
	6500	← 304°	→ 124°	124°	6000	$\star$ 1.4 NM to RWY 13
GP 3.00° TCH 44	6.9 NM		3.7 NM		1.4 NM	
CATEGORY	A	B	C	D		
LPV DA	4563- $\frac{3}{4}$ 250 (300- $\frac{3}{4}$ )					
LNAV MDA	4800-1	487 (500-1)	4800-1 $\frac{1}{4}$ 487 (500-1 $\frac{1}{4}$ )	4800-1 $\frac{1}{2}$ 487 (500-1 $\frac{1}{2}$ )		
CIRCLING	4800-1	487 (500-1)	4920-1 $\frac{3}{4}$ 607 (700-1 $\frac{3}{4}$ )	4960-2 647 (700-2)		