

WAAS CH <b>53302</b> <b>W04A</b>	APP CRS <b>042°</b>	Rwy Idg <b>5997</b> TDZE <b>3374</b> Apt Elev <b>3374</b>
--	------------------------	---

# RNAV (GPS) RWY 4

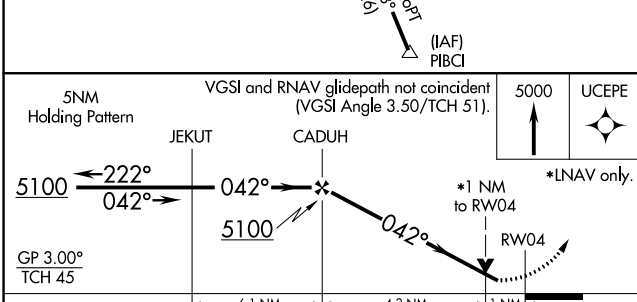
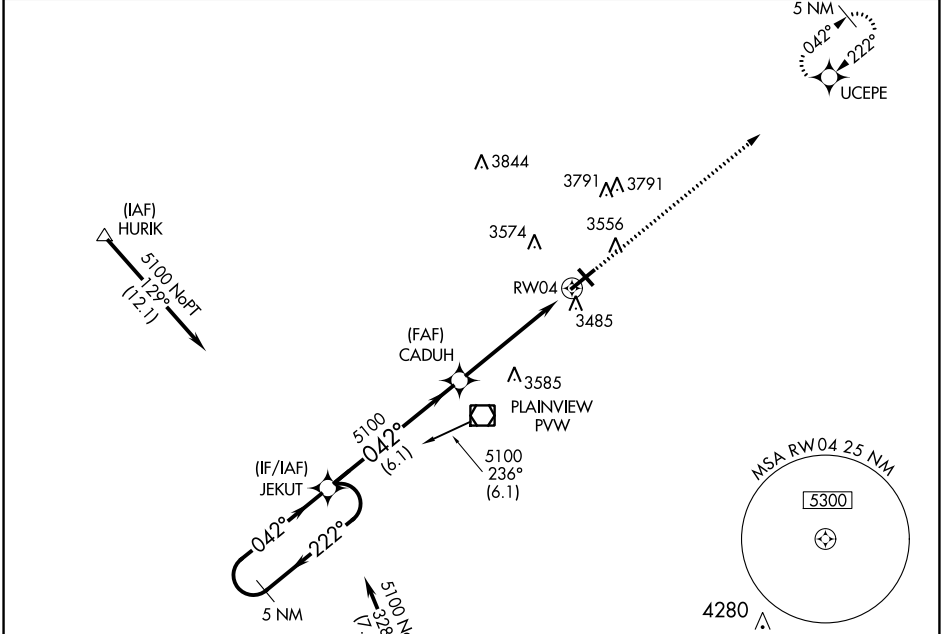
HALE COUNTY (PVW)

RNP APCH.

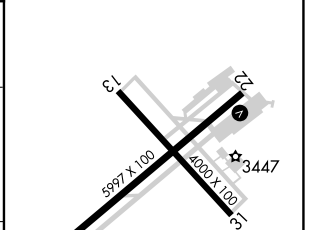
**⚠** For uncompensated Baro-VNAV systems, LNAV/VNAV NA below -21°C or above 42°C. VDP and Baro-VNAV NA when using Lubbock altimeter setting. Rwy 4 helicopter visibility reduction below ¼ SM NA. When local altimeter setting not received, use Lubbock altimeter setting; increase all DA 83 feet and increase all LPV and LNAV/VNAV visibility ½ SM, increase all MDA 100 feet and LNAV Cat C/D visibility ¼ SM and Circling Cat C/D visibility ½ SM.

MISSED APPROACH: Climb to 5000, direct UCEPE and hold.

AWOS-3 <b>119.675</b>	LUBBOCK APP CON <b>119.2 351.8</b>	CLNC DEL <b>118.4</b>	UNICOM <b>123.0 (CTAF) 0</b>
--------------------------	---------------------------------------	--------------------------	---------------------------------



ELEV 3374	TDZE 3374
-----------	-----------



CATEGORY	A	B	C	D
LPV DA	3624-1		250 (300-1)	
LNAV/VNAV DA	3730-1¼		356 (400-1¼)	
LNAV MDA	3800-1	426 (500-1)	3800-1¼	426 (500-1¼)
CIRCLING	3940-1¼	566 (600-1¼)	4160-2¼ 786 (800-2¼)	4160-2½ 786 (800-2½)

REIL Rwy 4 **0**  
REIL Rwy 22  
MIRL Rwy 4-22 and 13-31 **0**

SC-2, 28 NOV 2024 to 26 DEC 2024

SC-2, 28 NOV 2024 to 26 DEC 2024