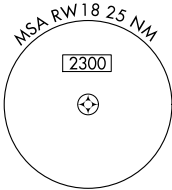
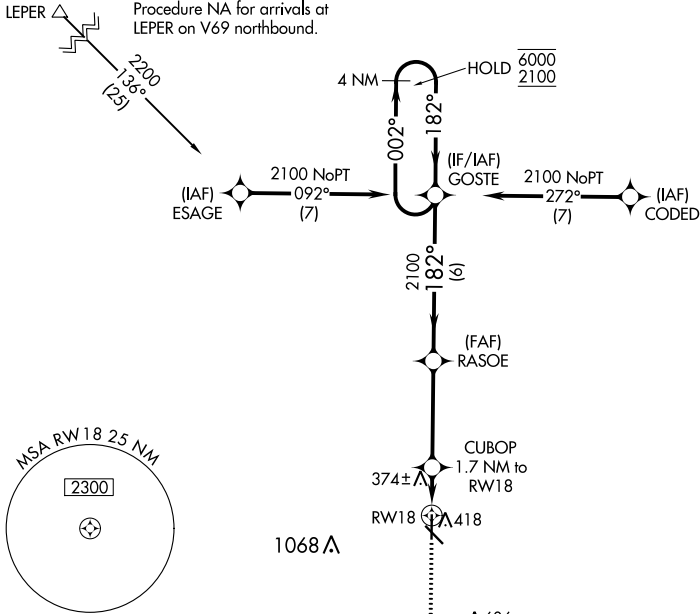


WAAS CH <b>78315</b> <b>W18A</b>	APP CRS <b>182°</b>	Rwy Idg TDZE Apt Elev	<b>5010</b> <b>295</b> <b>295</b>
--	------------------------	-----------------------------	---

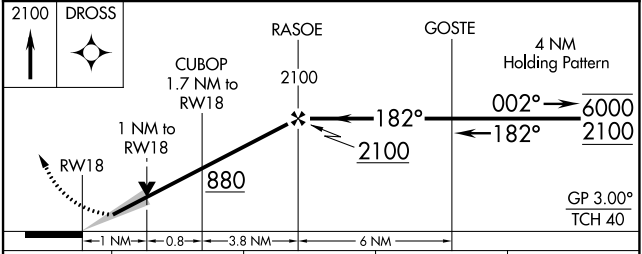
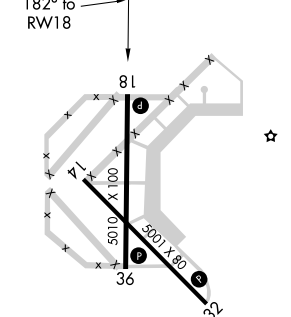
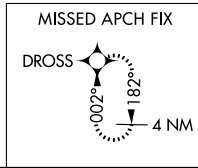
# RNAV (GPS) RWY 18

MALDEN RGNL (M.A.W)

RNP APCH-GPS.		MISSED APPROACH: Climb to 2100 direct DROSS and hold.	
▼ For uncompensated Baro-VNAV systems, LNAV/VNAV ▲ NA below -15°C or above 54°C.			
AWOS-3PT <b>119.825</b>	MEMPHIS CENTER <b>133.65 292.15</b>	GCO <b>135.075</b>	UNICOM <b>122.8 (CTAF) 0</b>



ELEV 295	TDZE 295
----------	----------



CATEGORY	A	B	C	D
LPV DA		495-1 200 (200-1)		NA
LNAV/VNAV DA		545-1 250 (300-1)		NA
LNAV MDA		640-1 345 (400-1)		NA
<input checked="" type="checkbox"/> CIRCLING	720-1 425 (500-1)	800-1 505 (600-1)	800-1½ 505 (600-1½)	NA

REIL Rws 14, 18, 32, and 36  
MIRL Rws 14-32 and 18-36

NC-3, 28 NOV 2024 to 26 DEC 2024

NC-3, 28 NOV 2024 to 26 DEC 2024