

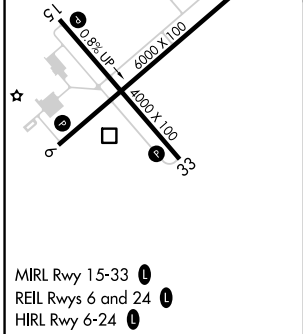
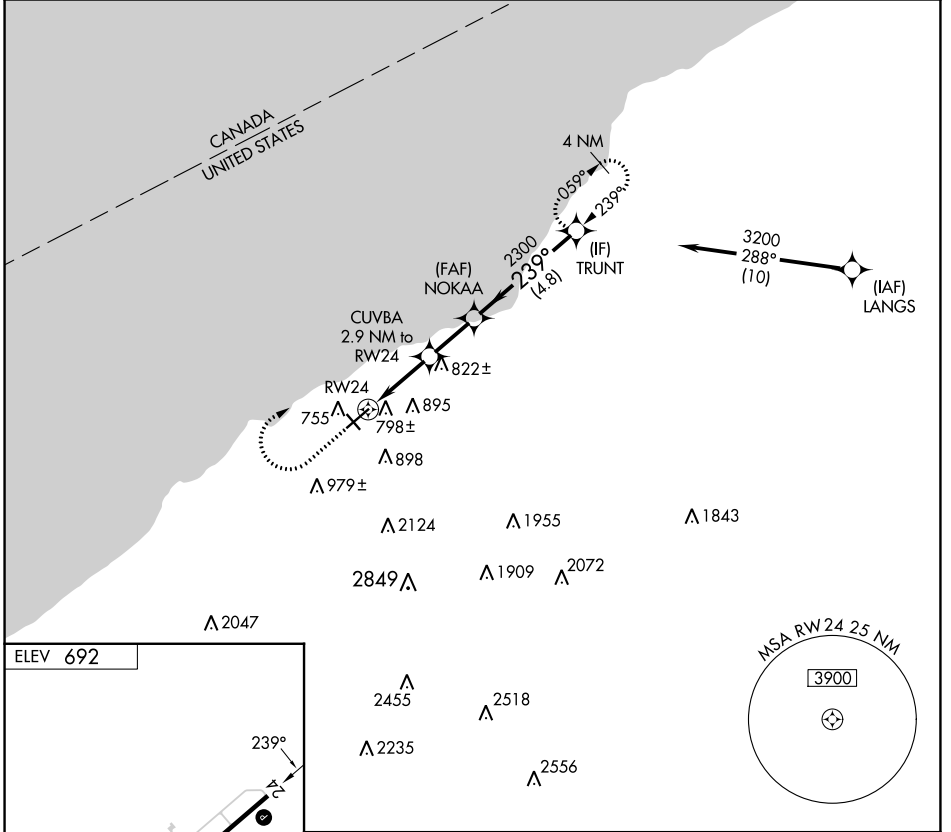
APP CRS	Rwy Idg	N/A
239°	TDZE	N/A
	Apt Elev	692

# RNAV (GPS)-A

CHAUTAUGUA COUNTY/DUNKIRK (DKK)

RNP APCH - GPS.	<p>⚠ Circling Cat D NA southeast of Rwy 6 and southwest of Rwy 33.          ⚠ Circling Rwy 6, 24, 33 NA at night.          ⚠ -22°C Rwy 6, 24, 33 helicopter visibility reduction below 1 SM NA.</p>	<p>MISSED APPROACH: Climb to 1900 then climbing right turn to 3200 direct TRUNT and hold.</p>

ASOS <b>119.275</b>	BUFFALO APP CON <b>126.5 317.6</b>	UNICOM <b>123.075 (CTAF) 0</b>
------------------------	---------------------------------------	-----------------------------------



MIRL Rwy 15-33 (L)  
 REIL Rws 6 and 24 (L)  
 HIRL Rwy 6-24 (L)

1900	3200	TRUNT	Visual Segment - Obstacles.
RW24		NOKAA	TRUNT
CUVBA 2.9 NM to RW24			
1440		2300	3200
2.9 NM		2.1 NM	4.8 NM
CATEGORY	A	B	C
CIRCLING	1200-1 508 (600-1)	1320-1 628 (700-1)	1640-2¾ 948 (1000-2¾)
			D
			2140-3 1448 (1500-3)

NE-2, 28 NOV 2024 to 26 DEC 2024

NE-2, 28 NOV 2024 to 26 DEC 2024