

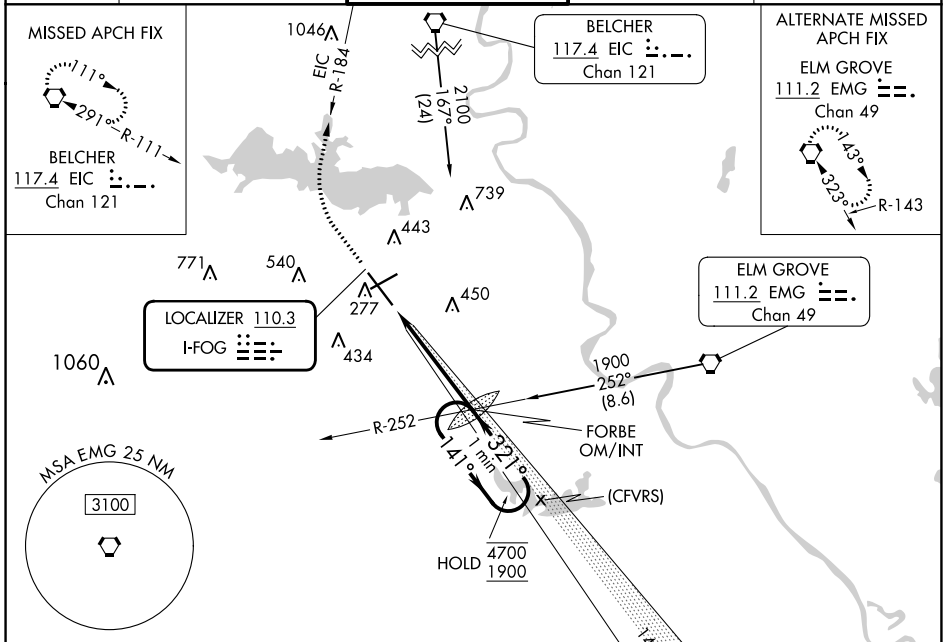
LOC I-FOG 110.3	APP CRS 321°	Rwy Idg 7975
		TDZE 222
		Apt Elev 258

ILS or LOC RWY 32

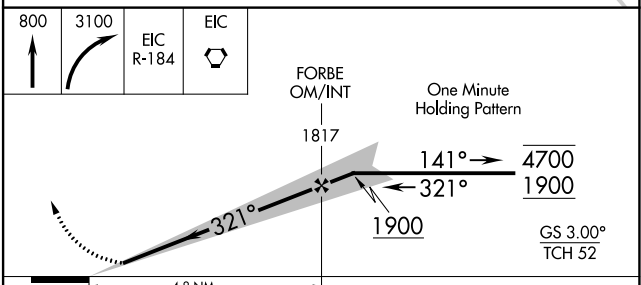
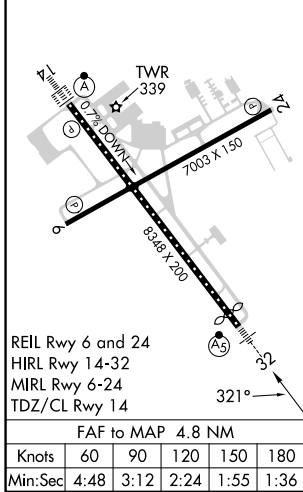
SHREVEPORT RGNL (SHV)

<p>Rwy 32 helicopter visibility reduction below RVR 4000 NA. Inop table does not apply to S-ILS 32 all Cats. For inop ALS, increase S-LOC 32 Cat A and B visibility to RVR 5500 and Cat C and D visibility to 1 3/8 SM.</p>	<p>MALSR</p>	<p>MISSED APPROACH: Climb to 800 then climbing right turn to 3100 on EIC VORTAC R-184 to EIC VORTAC and hold.</p>
---	--------------	---

<p>ATIS 128.45</p>	<p>SHREVEPORT APP CON 119.9 335.55</p>	<p>SHREVEPORT TOWER 121.4 236.775</p>	<p>GND CON 121.175 236.775</p>	<p>CLNC DEL 124.65</p>
-------------------------------	---	--	---	-----------------------------------



ELEV 258	D	TDZE 222
----------	----------	----------



CATEGORY	A	B	C	D
S-ILS 32		422/40	200 (200-3/4)	
S-LOC 32	720/40	498 (500-3/4)	720/50	498 (500-1)
<input checked="" type="checkbox"/> CIRCLING	760-1	502 (600-1)	980-2 722 (800-2)	1100-2 3/4 842 (900-2 3/4)

SC-4, 28 NOV 2024 to 26 DEC 2024

SC-4, 28 NOV 2024 to 26 DEC 2024