

LOC/DME I-TJL <b>110.15</b>	APP CRS <b>195°</b>	Rwy Idg <b>6230</b>
Chan <b>38 (Y)</b>		TDZE <b>6</b>
		Apt Elev <b>8</b>

# ILS or LOC RWY 19

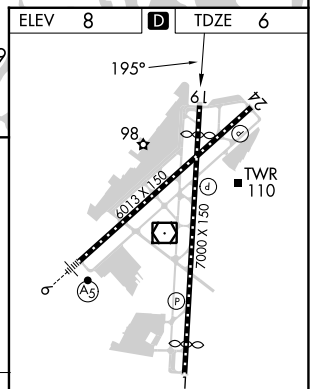
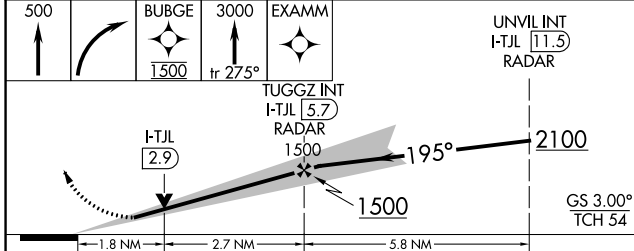
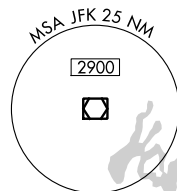
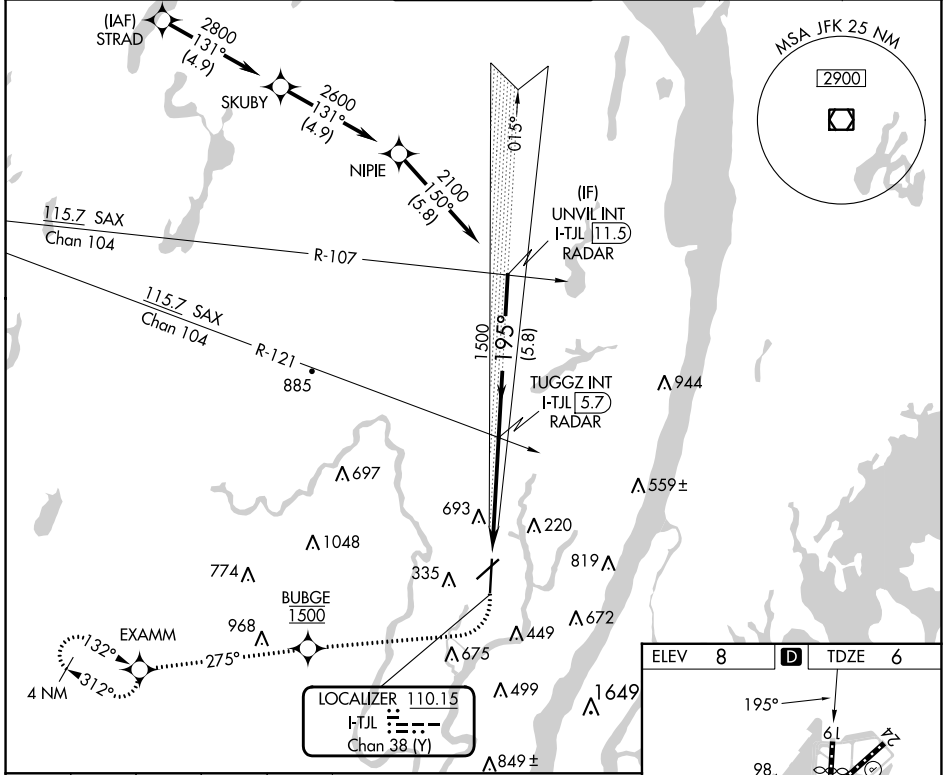
TETERBORO (TEB)

RNP APCH - GPS. RADAR required.

**▲** Circling NA for Cats B, C, D northwest of Rwy 6-19.

MISSED APPROACH: Climb to 500 then climbing right turn direct BUBGE, cross BUBGE at 1500, then climb to 3000 on track 275° to EXAMM and hold, continue climb-in-hold to 3000.

D-ATIS <b>114.2 132.85</b>	NEWARK APP CON <b>127.6 379.9</b>	TETERBORO TOWER <b>119.5</b>	GND CON <b>121.9</b>	CLNC DEL <b>128.05</b>	CPDLC
-------------------------------	--------------------------------------	---------------------------------	-------------------------	---------------------------	-------



CATEGORY	A	B	C	D
S-ILS 19		241-3/4	235 (300-3/4)	
S-LOC 19	640-1	634 (700-1)	640-1 3/4	634 (700-1 3/4)
<b>C</b> CIRCLING	760-1	752 (800-1)	820-2 1/2	1040-3
			812 (900-2 1/2)	1032 (1100-3)

TDZ/CL Rwys 6 and 19	REIL Rwys 1, 6, 19 and 24	HIRL Rwys 1-19 and 6-24
FAF to MAP 4.5 NM		
Knots	60	90 120 150 180
Min:Sec	4:30	3:00 2:15 1:48 1:30

NE-2, 28 NOV 2024 to 26 DEC 2024

NE-2, 28 NOV 2024 to 26 DEC 2024