

WAAS CH <b>53429</b> <b>W23A</b>	APP CRS <b>229°</b>	Rwy Idg TDZE Apt Elev	<b>4387</b> <b>2284</b> <b>2284</b>
--	------------------------	-----------------------------	---

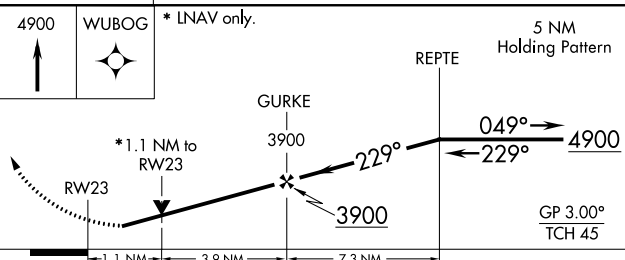
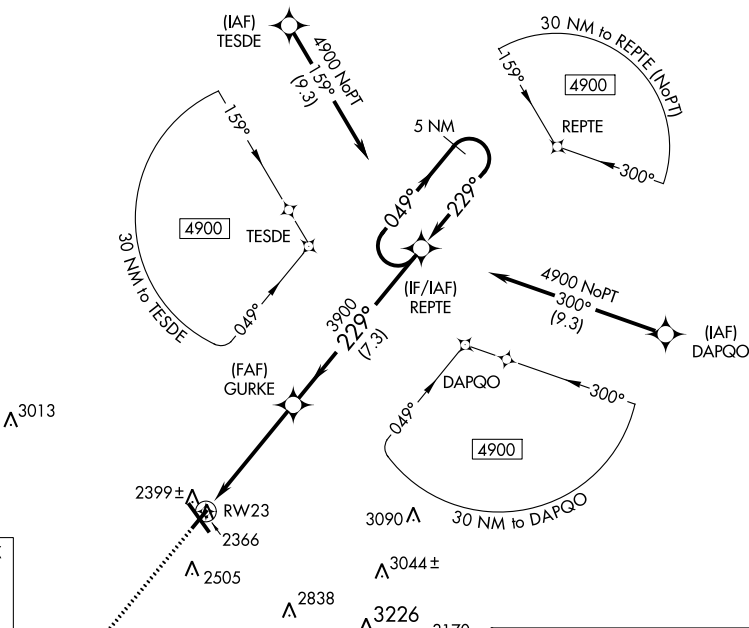
# RNAV (GPS) RWY 23

JOHN MURTHA JOHNSTOWN/CAMBRIA COUNTY (JST)

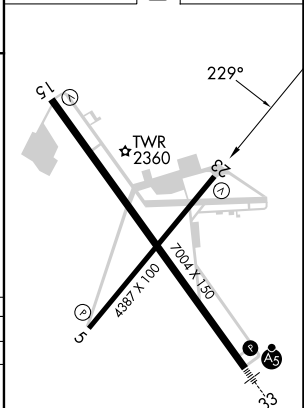
**T** For uncompensated Baro-VNAV systems, LNAV/VNAV NA below -19°C (-2°F) or above 29°C (84°F). When local altimeter setting not received, procedure NA.  
**A** DME/DME RNP-0.3 NA. Rwy 23 helicopter visibility reduction below ¾ SM NA.

MISSED APPROACH: Climb to 4900 direct WUBOG and hold.

ATIS <b>118.325</b>	JOHNSTOWN APP CON * <b>121.2 299.2</b>	JOHNSTOWN TOWER * <b>125.75 (CTAF) 0</b>	GND CON <b>121.6</b>	CLNC DEL <b>126.85 235.775</b>	UNICOM <b>122.95</b>
------------------------	---	---	-------------------------	-----------------------------------	-------------------------



ELEV 2284	<b>D</b>	TDZE 2284
-----------	----------	-----------



CATEGORY	A	B	C	D
LPV DA		2534-¾	250 (300-¾)	
LNAV/VNAV DA		2584-1	300 (300-1)	
LNAV MDA		2660-1	376 (400-1)	
<b>C</b> CIRCLING	2700-1 416 (500-1)	2880-1 596 (600-1)	2880-1½ 596 (600-1½)	3000-2¼ 716 (800-2¼)

REIL Rwy 5 and 23  
HIRL Rwy 15-33 **0**  
MIRL Rwy 5-23 **0**