

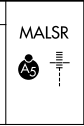
LOC/DME I-HOT 111.5 Chan 52	APP CRS 053°	Rwy Idg 6595 TDZE 516 Apt Elev 540
---	------------------------	---

ILS or LOC RWY 5

MEML FLD (HOT)

ADF or DME required.

NA Circling NA northwest of Rwy 5-23.
Use I-HOT DME when on localizer course.

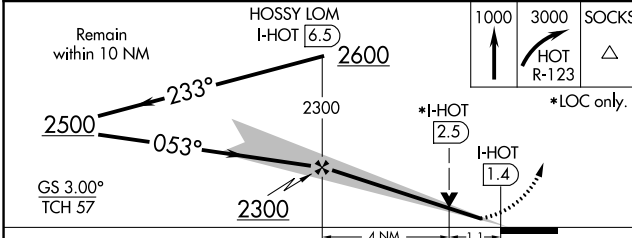
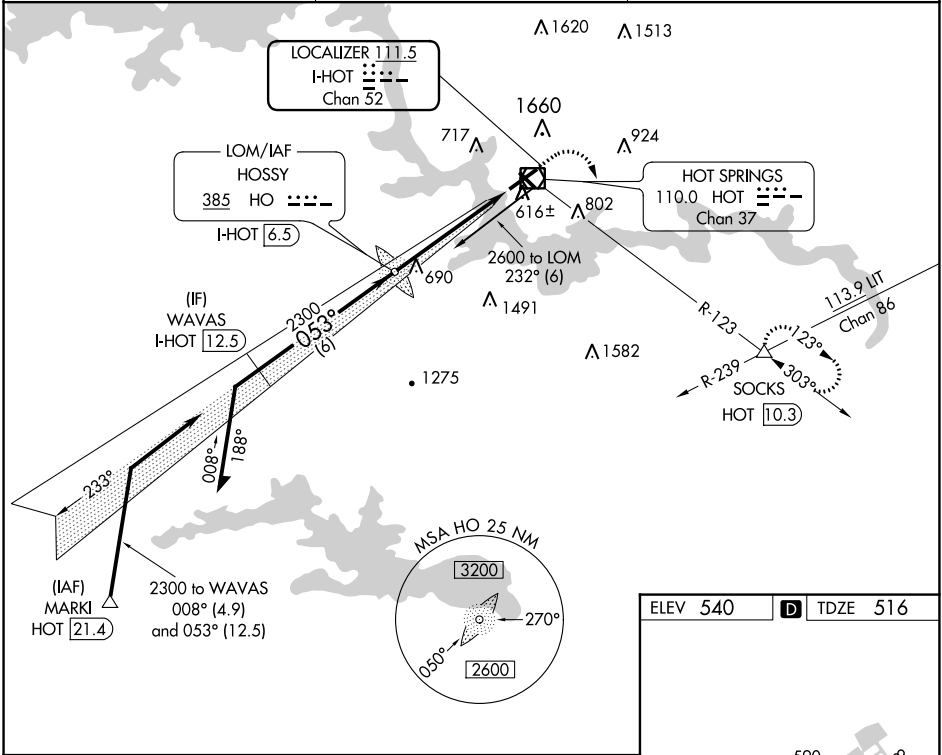


MISSED APPROACH: Climb to 1000 then climbing right turn to 3000 on HOT VOR/DME R-123 to SOCKS INT/HOT 10.3 DME and hold.

ASOS
119.925

MEMPHIS CENTER
128.475 377.15

UNICOM
123.0 (CTAF)



CATEGORY	A	B	C	D
S-ILS 5	732-1/2 216 (200-1/2)			
S-LOC 5	940-1/2	424 (400-1/2)	940-3/4	424 (400-3/4)
CIRCLING	1080-1 540 (600-1)		1380-2 1/2 840 (900-2 1/2)	1620-3 1080 (1100-3)

ELEV 540	D TDZE 516
FAF to MAP 5.1 NM	
Knots	60 90 120 150 180
Min:Sec	5:06 3:24 2:33 2:02 1:42

SC-1, 28 NOV 2024 to 26 DEC 2024

SC-1, 28 NOV 2024 to 26 DEC 2024