

WAAS CH 56628 W19A	APP CRS 192°	Rwy Idg TDZE Apt Elev	4506 3146 3150
--	------------------------	-----------------------------	---

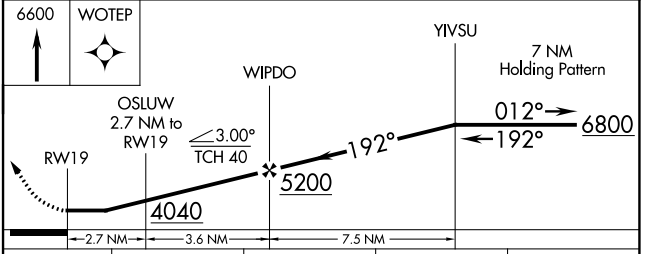
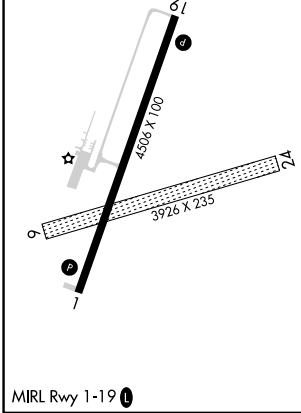
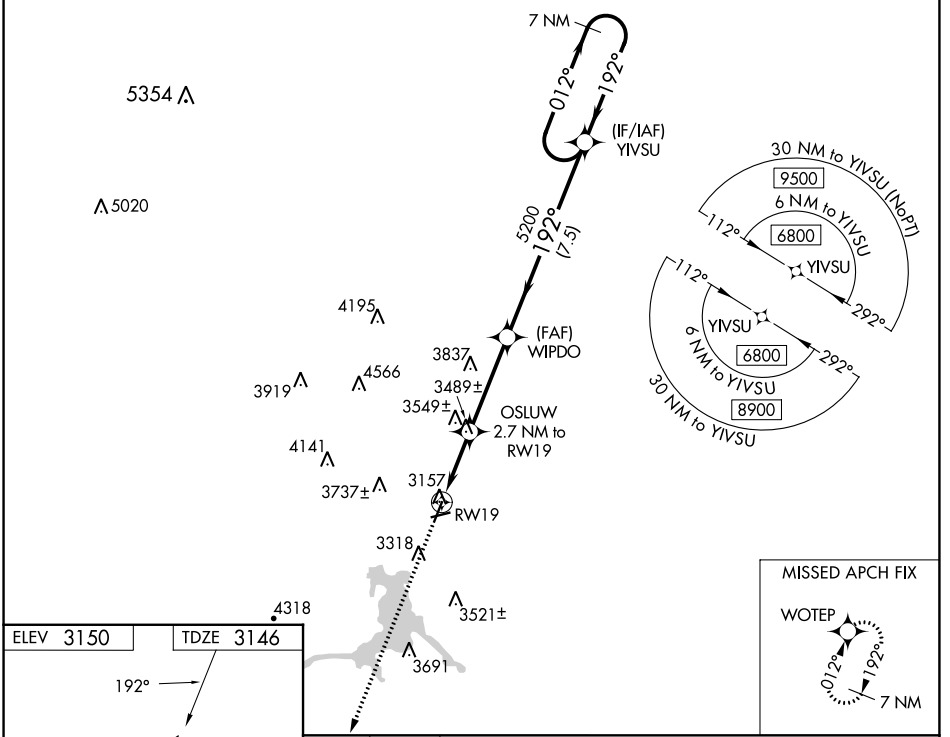
RNAV (GPS) RWY 19

HOT SPRINGS MUNI (HSR)

▼ Rwy 19 helicopter visibility reduction below ¾ SM NA. DME/DME RNP-0.3 NA.
▲ NA Circling NA to Rwy 6 and 24. Circling NA west of Rwy 1-19.
 Use Chadron, NE altimeter setting, when not received use Rapid City Rgnl altimeter setting and increase all MDA 20 feet, increase LNAV Cat C and D visibility ½ SM.

MISSED APPROACH: Climb to 6600 direct WOTEP and hold.

CDR ASOS 118.05	DENVER CENTER 127.95 338.2	GCO 121.725	AUNICOM 122.8 (CTAF) 0
---------------------------	--------------------------------------	-----------------------	----------------------------------



CATEGORY	A	B	C	D
LP MDA	3840-1 694 (700-1)		3840-2 694 (700-2)	
LNAV MDA	3900-1 754 (800-1)	3900-1¼ 754 (800-1¼)	3900-2 754 (800-2)	
C CIRCLING	3900-1 750 (800-1)		3980-2½ 830 (900-2½)	4100-3 950 (1000-3)

NC-1, 28 NOV 2024 to 26 DEC 2024

NC-1, 28 NOV 2024 to 26 DEC 2024