


LOC/DME I-FNU 110.15 Chan 38 (Y)	APP CRS 275°	Rwy Idg 11002 TDZE 45 Apt Elev 55
--	------------------------	--

ILS or LOC RWY 27R

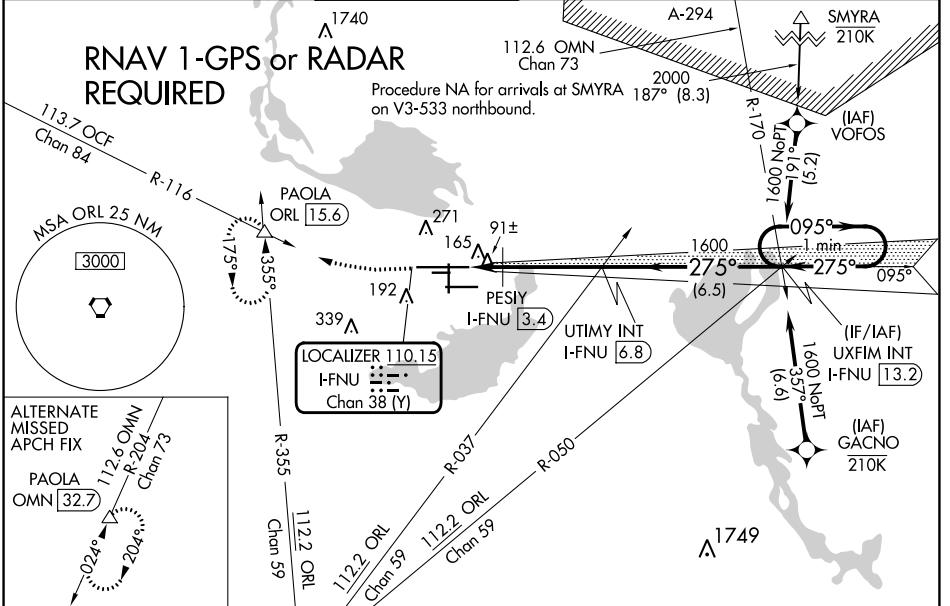
ORLANDO SANFORD INTL (SF'B)

▼ For inop ALS, increase PESIY FIX minimums
▲ Cat C/D visibility to 1 SM.

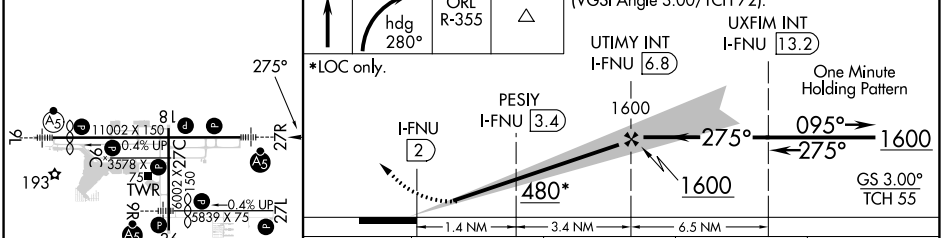
MALSR


MISSED APPROACH: Climb to 500 then climbing right turn to 2800 on heading 280° and ORL VORTAC R-355 to PAOLA INT/ORL 15.6 DME and hold, continue climb-in-hold to 2800.

ATIS 125.975	ORLANDO APP CON 135.3 351.9 (NORTH) 119.775 351.9 (SOUTH)	SANFORD TOWER* 120.3 (CTAF) 0 254.35	GND CON 121.35 254.35	CLNC DEL 123.975	CLNC DEL 121.35 (when twr closed)
------------------------	---	---	---------------------------------	----------------------------	--



ELEV 55	D	TDZE 45	500	2800	PAOLA ORL R-355	VGSI and ILS glidepath not coincident (VGSI Angle 3.00/TCH 72).
---------	----------	---------	-----	------	-----------------	---



CATEGORY	A	B	C	D
S-ILS 27R	245-1/2		200 (200-1/2)	
S-LOC 27R	480-1/2	435 (500-1/2)	480-3/4	435 (500-3/4)
C CIRCLING	580-1	525 (600-1)	600-1/2 545 (600-1/2)	640-2 585 (600-2)
PESIY FIX MINIMUMS				
S-LOC 27R	400-1/2	355 (400-1/2)	400-5/8	355 (400-5/8)
C CIRCLING	580-1	525 (600-1)	600-1/2 545 (600-1/2)	640-2 585 (600-2)

MIRL Rwy 9C-27C and 18-36
 HIRL Rwy 9L-27R and 9R-27L
 REIL Rwy 9C, 18, 27L and 36

FAF to MAP 4.8 NM

Knots	60	90	120	150	180
Min:Sec	4:48	3:12	2:24	1:55	1:36

SE-3, 28 NOV 2024 to 26 DEC 2024

SE-3, 28 NOV 2024 to 26 DEC 2024